

# The Ghana Team

## IAP Trip Itinerary and Projects



### Students

[Eight anonymous MIT students, names removed for privacy]

### Trip Leaders

Amy Smith & Kofi Taha

**D-Lab**

**November 23, 2009**

# Ghana: The Basics



West African nation  
Population 23.8 million (2009)  
GDP per capita: \$1572  
Current President: John Atta Mills  
“Good afternoon” = Ma-ha-o (Twi)



<https://www.cia.gov/library/publications/the-world-factbook/geos/gh.html>  
<http://en.wikipedia.org/wiki/Ghana>

# Projects: When and Where?

1/6/2010: Accra to Kumasi

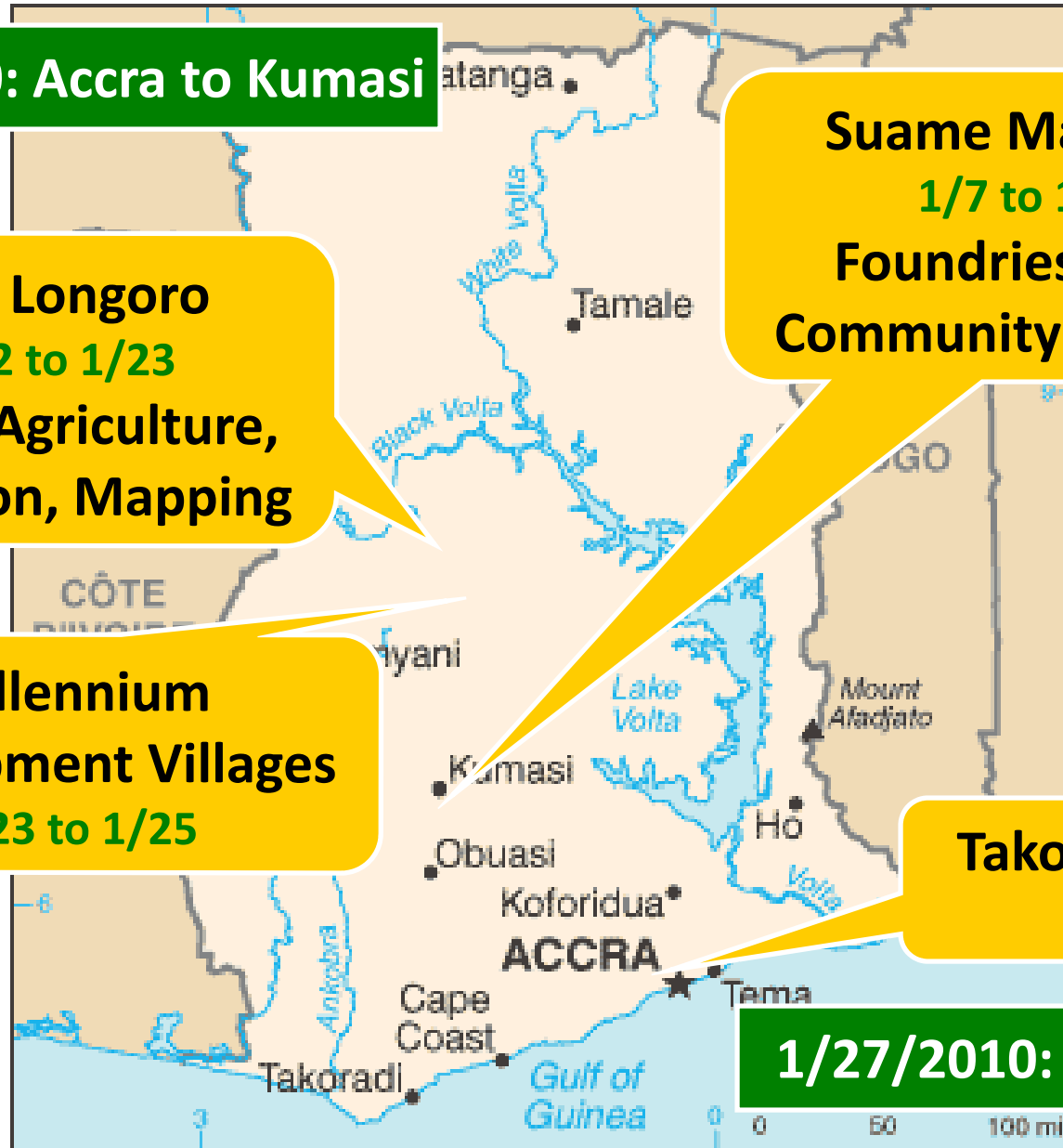
**New Longoro**  
1/12 to 1/23  
Water, Agriculture,  
Education, Mapping

**Millennium  
Development Villages**  
1/23 to 1/25

**Suame Magazine**  
1/7 to 1/11  
Foundries, ITTU,  
Community Mapping

**Takoradi or Accra**  
1/26

1/27/2010: Accra to USA



# Projects: When and Where?

1/6/2010: Accra to Kumasi

**New Longoro**

1/12 to 1/23

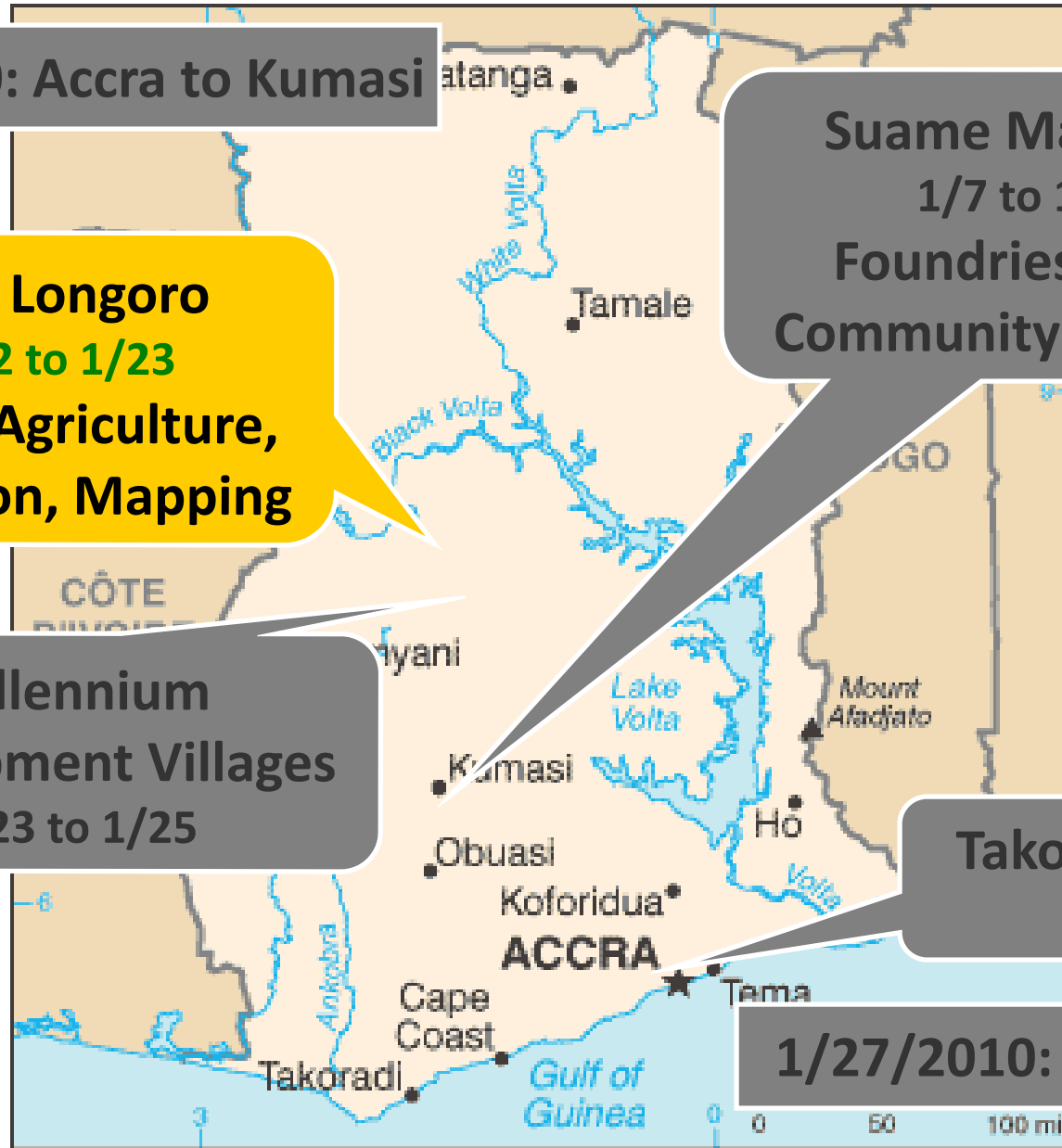
Water, Agriculture,  
Education, Mapping

Suame Magazine  
1/7 to 1/11  
Foundries, ITTU,  
Community Mapping

Millennium  
Development Villages  
1/23 to 1/25

Takoradi or Accra  
1/26

1/27/2010: Accra to USA



# Water Sanitation

**Borehole**



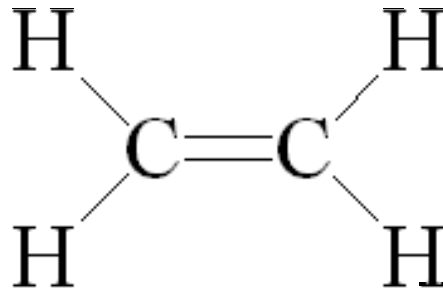
**River Crossing**



**Fiber-Reinforced  
Concrete**

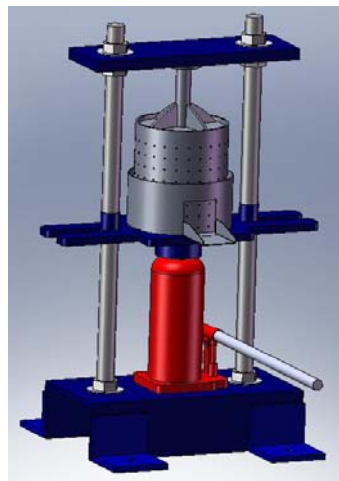
# Agriculture: Post-Harvest Processing

## Ethylene absorption



- Testing safe, simple chemical absorbers
- Cheap, mobile, easily packaged

## Shea Nut Oil Press



- New press eliminates six traditional steps of processing
- Evaluation: Oil testing, output, use with other nuts



# Education

## New Longoro-Hastings Schools Partnership

- Objective: teach fourth graders from MA about Ghana and New Longoro students about the US



## Saltwater Batteries

- Low-cost batteries made from Al cans
- Teach basic chemistry/technology

Images © source unknown. All rights reserved. This content is excluded from our Creative Commons license. For more information, see <http://ocw.mit.edu/fairuse>.

# Community Mapping

- Objectives
  - to show relevant information in a geographical context
  - to help other projects evaluate the situation and their impact
- “What resources are available and where?”
- Examples
  - Mapping by schools’ students
  - Social mapping
  - Tomato transport

Images of GPS system and GIS maps removed due to copyright restrictions.



MIT OpenCourseWare  
<http://ocw.mit.edu>

EC.701J / 11.025J / 11.472J D-Lab I: Development  
Fall 2009

For information about citing these materials or our Terms of Use, visit: <http://ocw.mit.edu/terms>.