

# **Alternative MicroFabrication and Applications in Medicine and Biology**

Massachusetts Institute of Technology

6.152 - Lecture 11

Fall 2005

*These slides prepared by Dr. Hang Lu (Georgia Tech)*

# Outline of Today's Materials

---

- Intro
- Alternative materials and fabrication techniques
- Applications in biology and chemistry
- Applications in medicine
- A real MTL example of rapid prototyping

# Micro Systems for Bio / Med

---

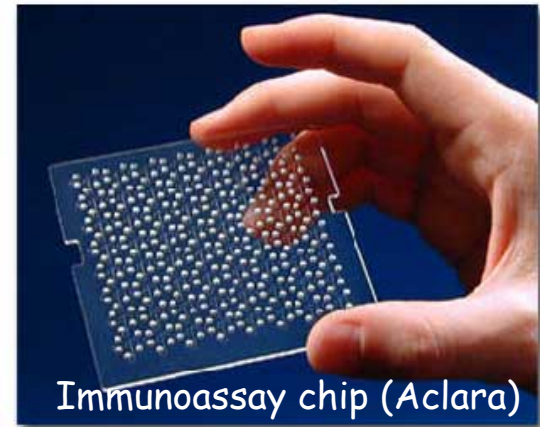
---

- Micro systems have characteristic length scale in the order of microns. (Human hair width is ~100 microns.)
- The applications of these systems span
  - Biological analysis
  - Medical diagnosis
  - Chemical analysis and synthesis
  - Drug discovery
  - Drug Delivery
  - ...

# Advantages of Micro Systems

---

- Small length scale
- Laminar flow (good and bad)
- High surface-to-volume ratio
- Small thermal mass
  
- Close to some biological length scale
- Shorter processing time
- Less sample / reagent required
- Disposable
- Automation possible
- Parallel operation possible – high throughput
- Integration possible



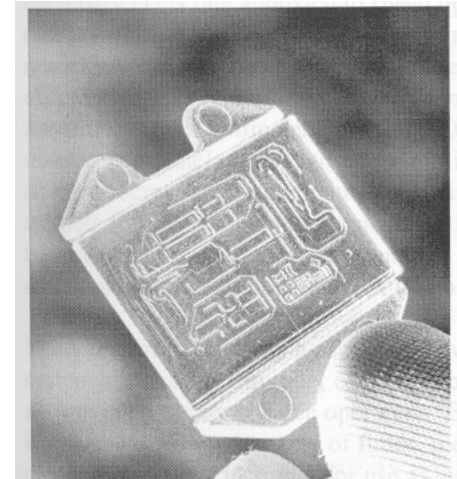
Whitesides (Harvard U.);  
Photo credit: Felice Frankel



# Alternative Materials

---

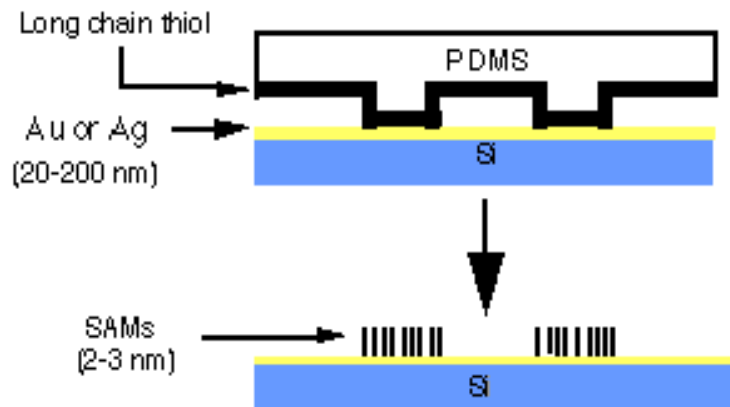
- Materials requirement for bioMEMS is different from that for MEMS.
- Desired properties of bioMEMS materials
  - Biocompatible
  - Chemically modifiable
  - Easy to fabricate
  - Economic
  - Soft and compliant
  - Smart
- If not Si and glass, what then?
- *Polymers* (e.g. PDMS, PMMA) are good materials especially for biological applications.



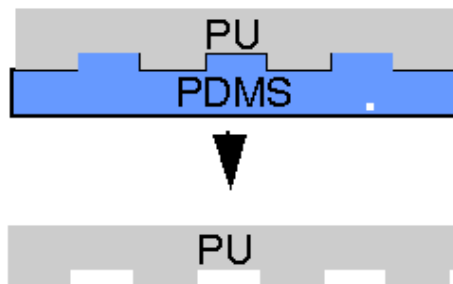
# Alternative Fabrication Methods

- Soft lithography

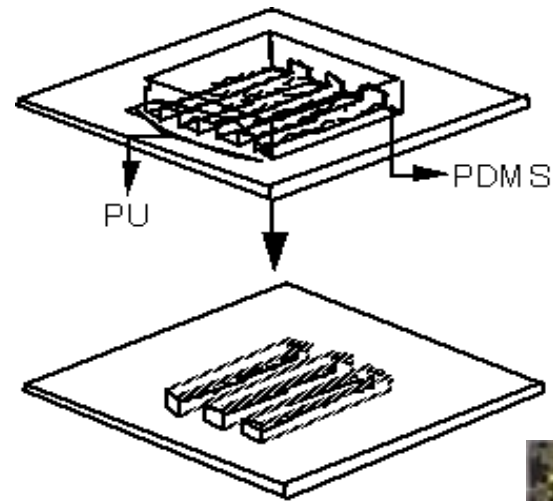
## Micro contact printing



## Replica Molding



## Micro molding in capillaries (MIMC)



Y. Xia and G.M. Whitesides (Harvard U.)

Photographed  
by Felice  
Frankel

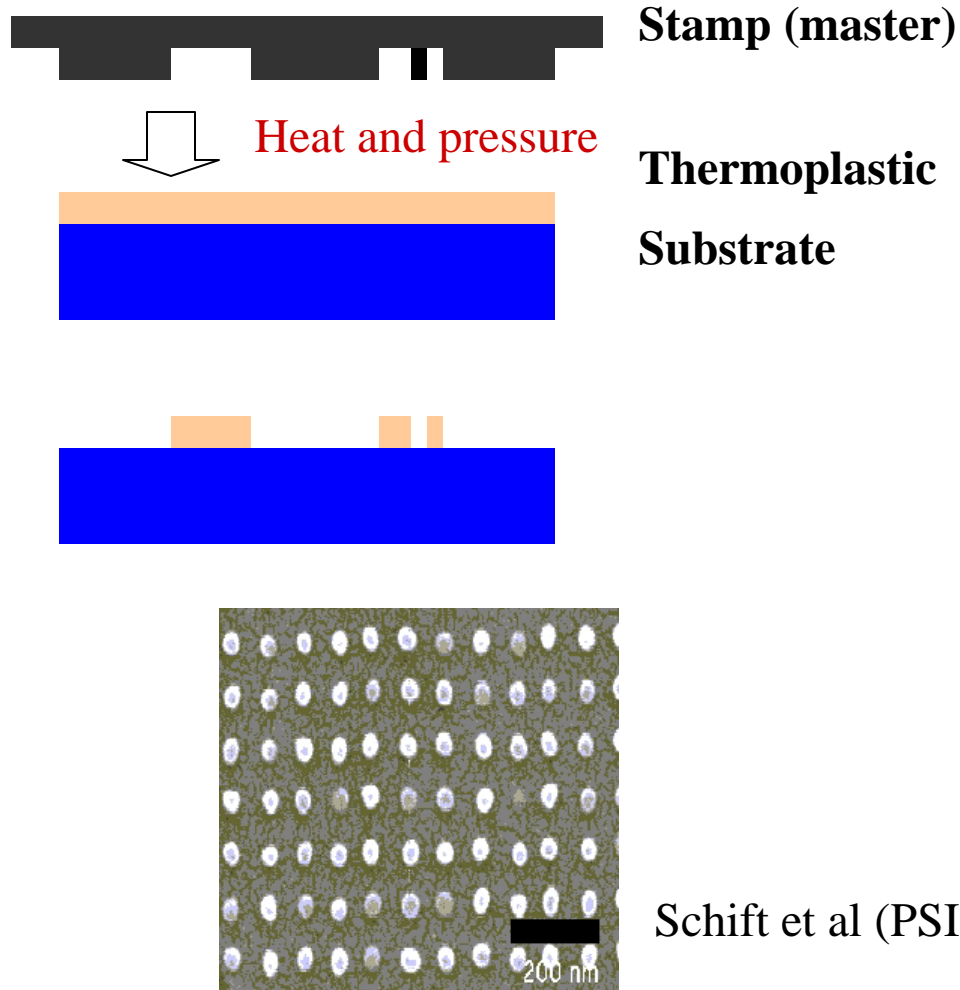


# Other Polymer Methods

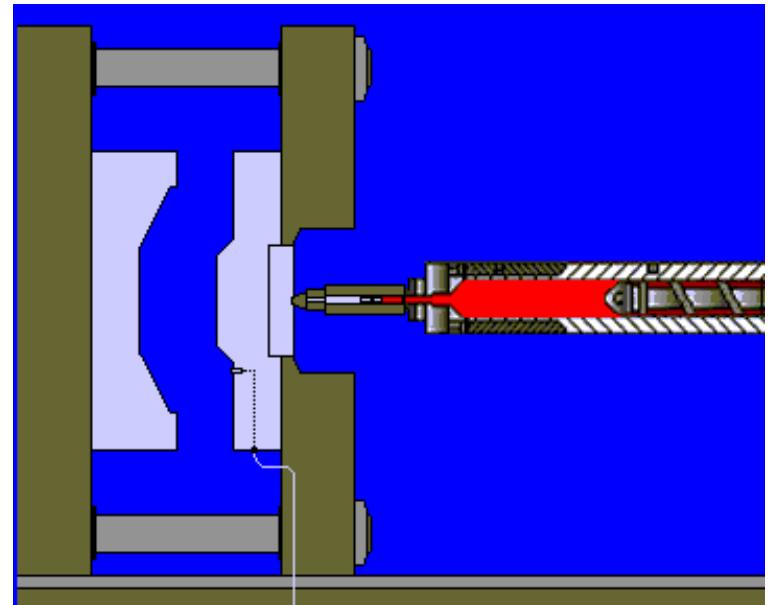
---

---

- Hot embossing

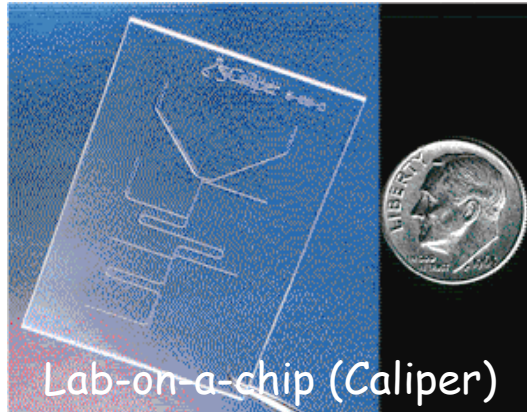


- Injection molding

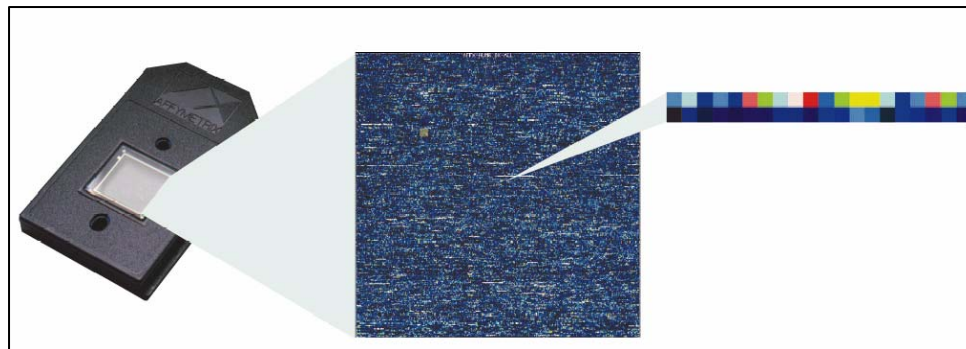


# Examples of bioMEMS Systems

---



- Detection and diagnosis
- Synthesis and analysis
- Interaction and interrogation
- Treatment



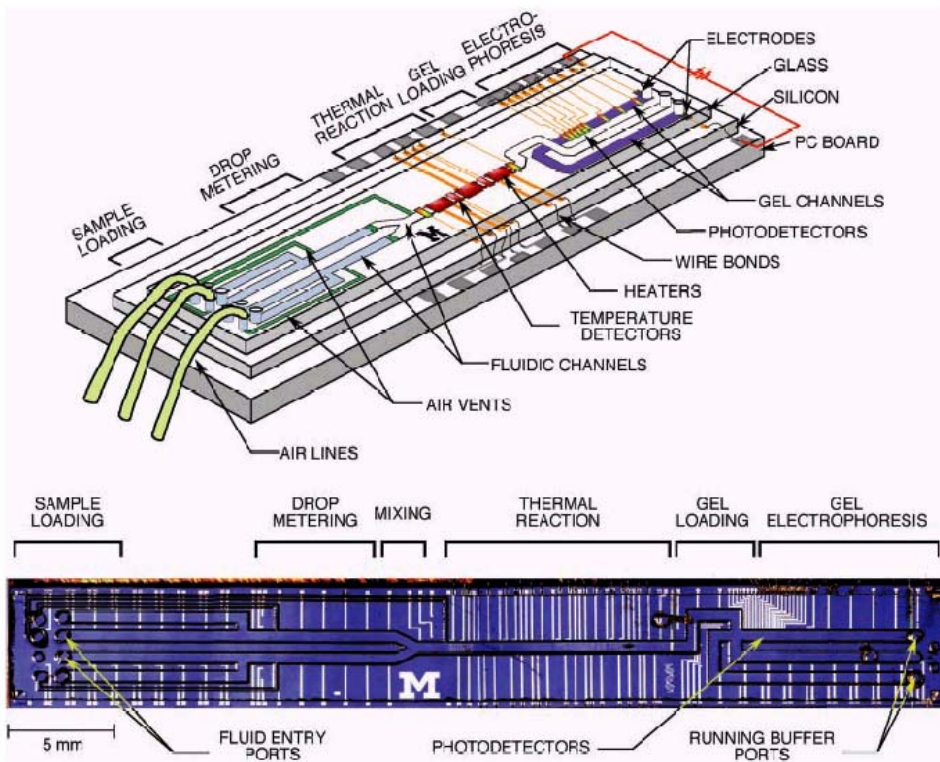
GeneChip (Affymetrix)



ImmunoChip (Aclara)

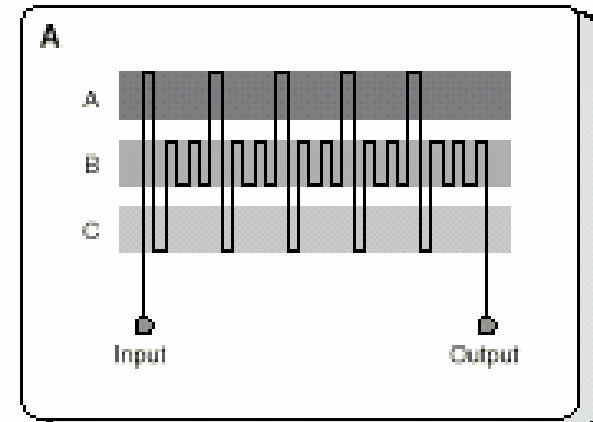


# DNA electrophoresis I



DNA analysis chip (M. A. Burns, U Mich)

- Metering samples
- PCR reaction
- Gel electrophoresis
- Sensors and actuators

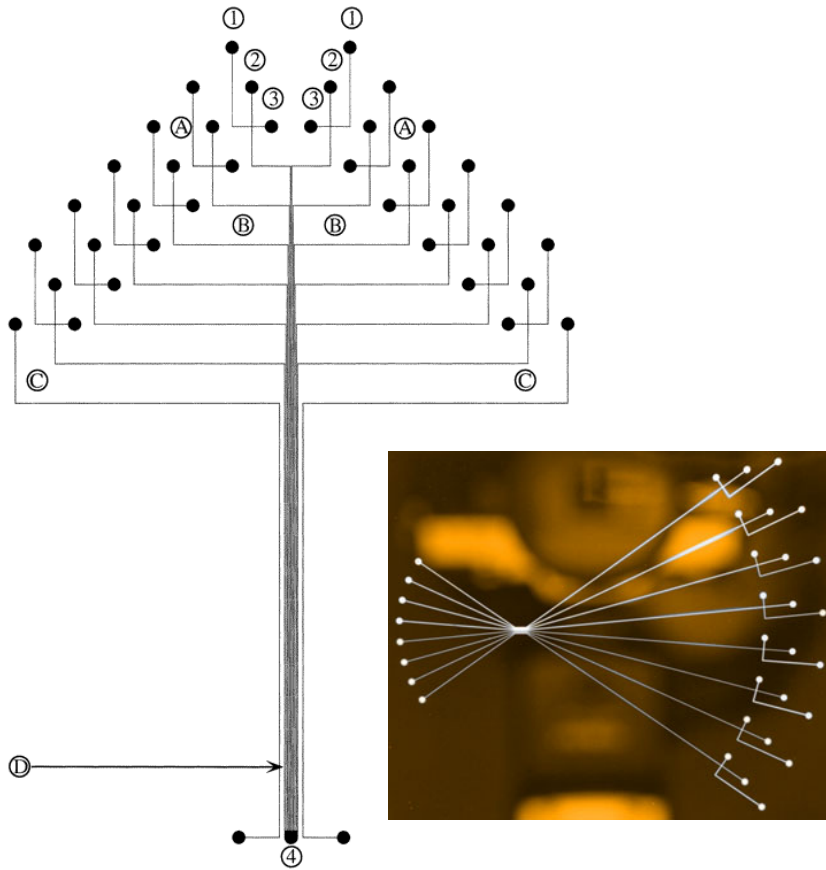


- A 95°C - melting
- B 77°C - extension
- C 80°C - annealing

PCR chip (A. Manz, Imperial College)

- Etched glass
- Continuous
- Three T zones
- Thermal insulation

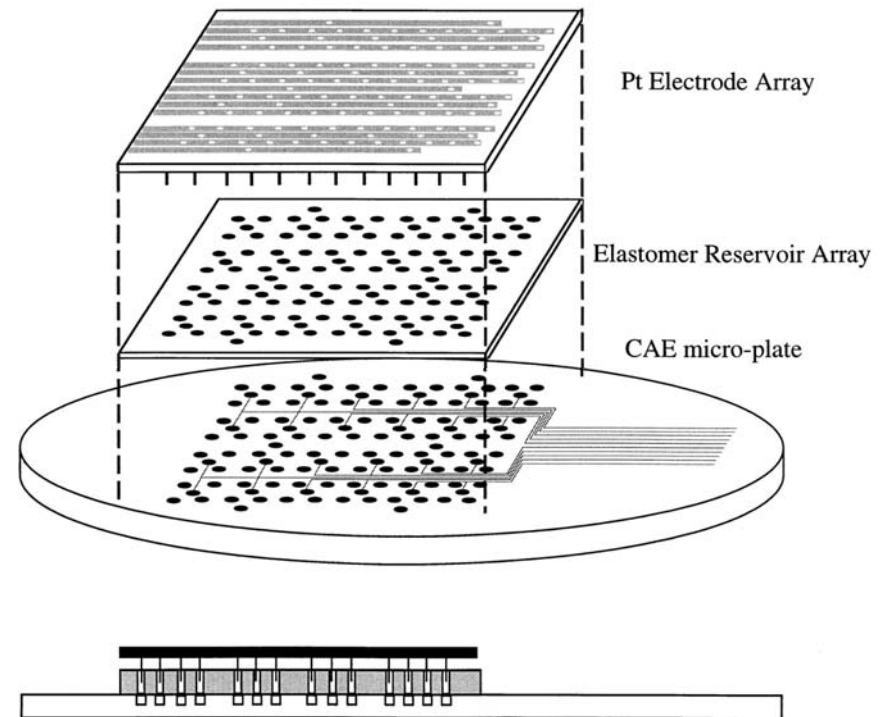
# DNA electrophoresis II



Mathies (Berkeley)

- High throughput
- Etched glass

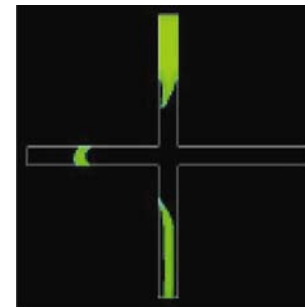
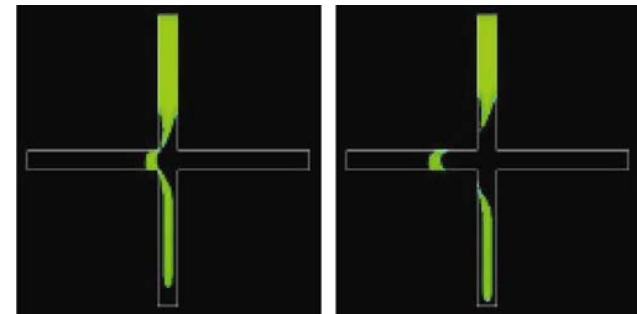
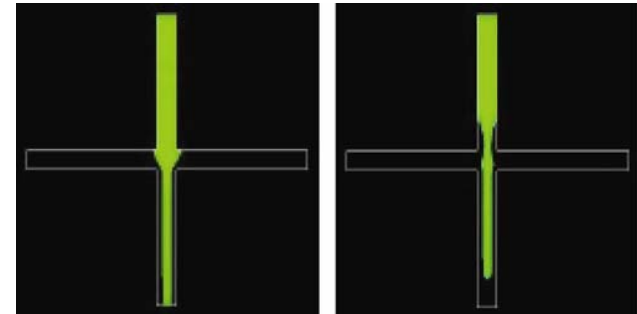
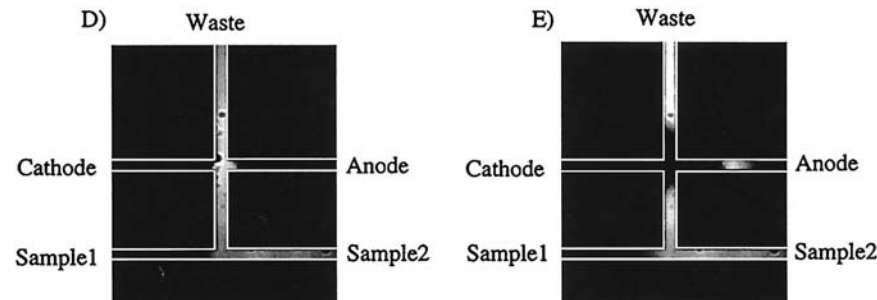
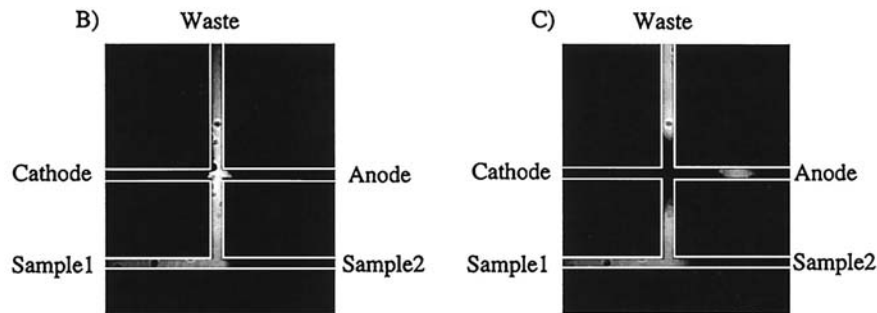
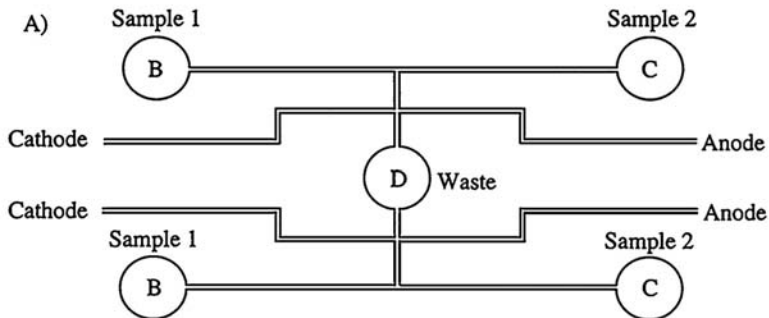
- Electrode insertion scheme matching high throughput need



# DNA electrophoresis III

- Sample injection

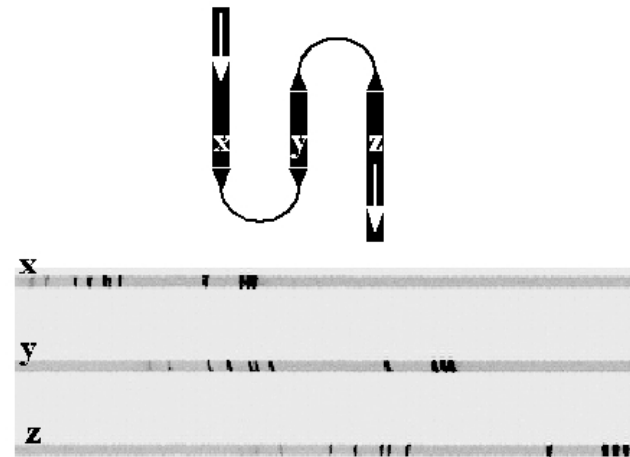
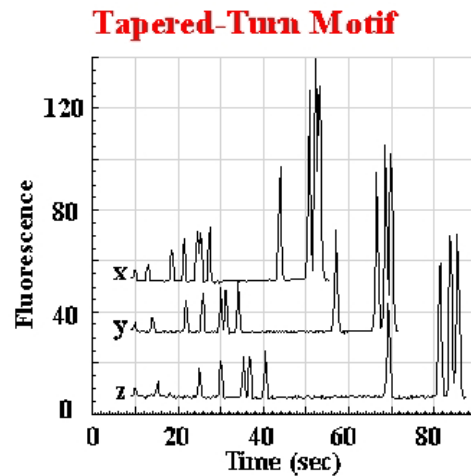
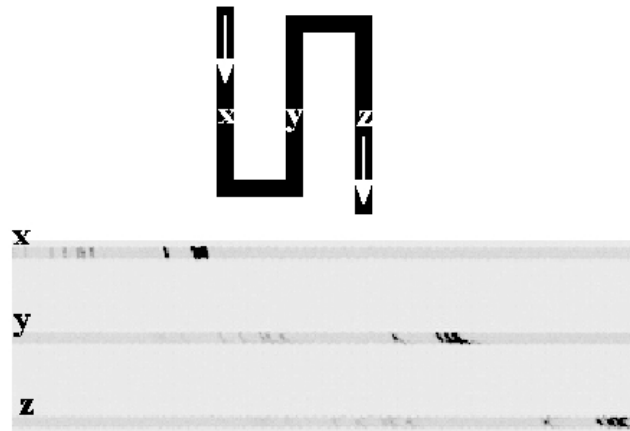
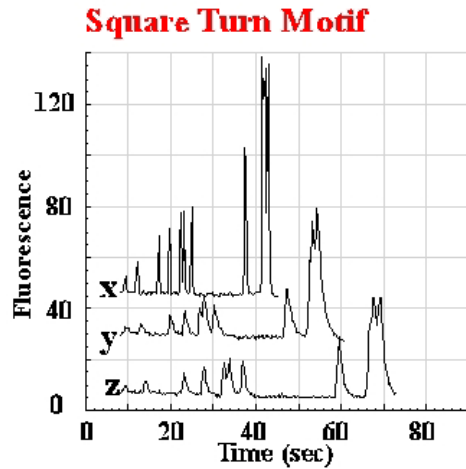
Mathies (Berkeley)



Simulation - new pinching design (Coventors Inc)

# DNA electrophoresis IV

- Race track effect – optimizing the design

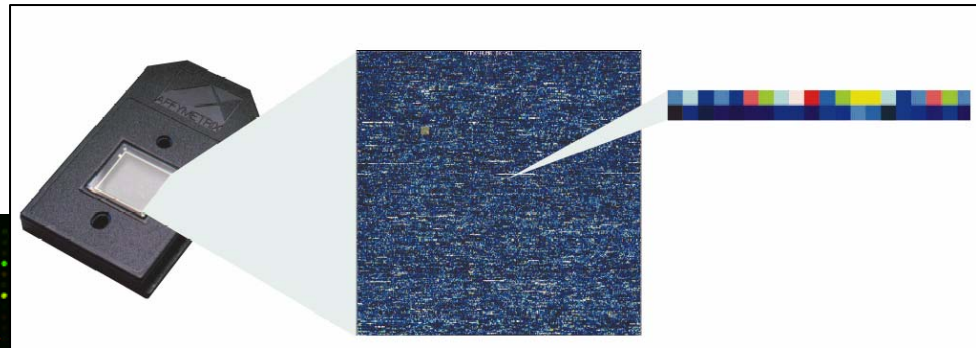
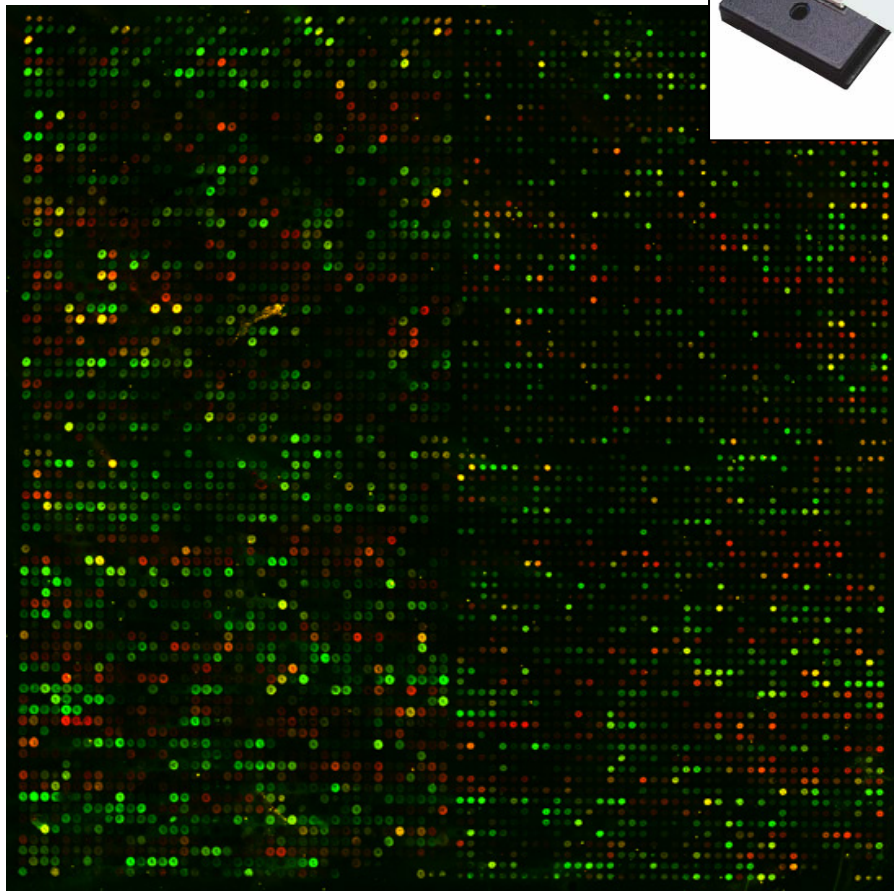


Mathies (Berkeley)

# DNA microarrays

---

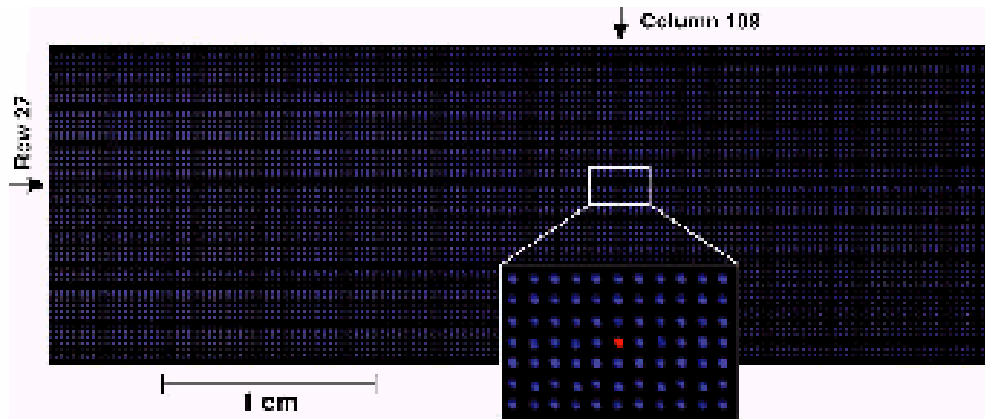
- Affymetrix



GeneChip (Affymetrix)

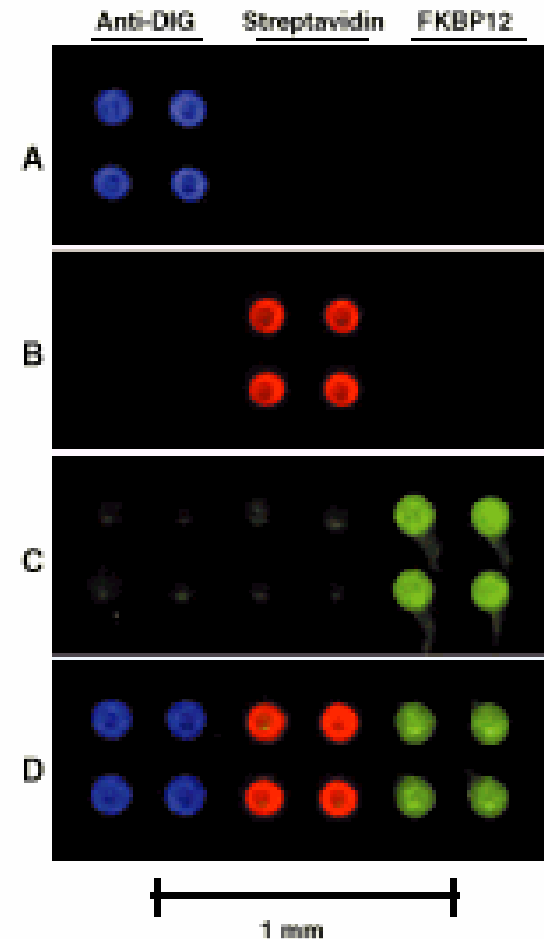
- cDNA arrays
- Genetic profiling
- Relative fluorescence measurement
- Fabricated with lithographic techniques

# Protein microarrays



Schreiber (Harvard U.)

- Small molecule –protein interactions
  - High throughput screening of compounds
  - Printed glass slide
- 
- Protein – protein interactions
  - Protein profiling
  - Derivatized glass slide



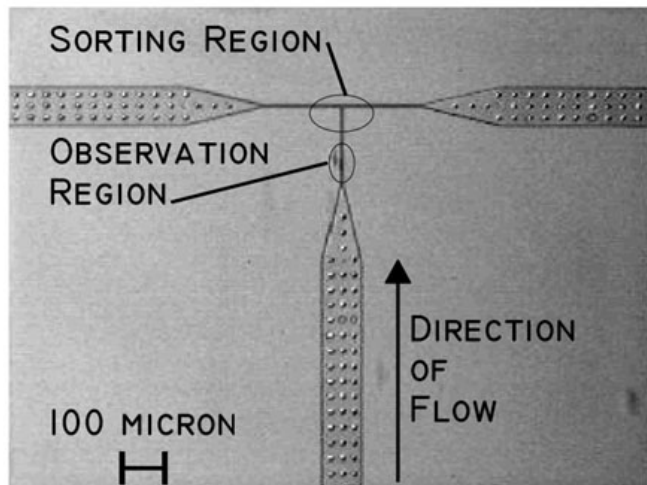
MacBeath (Harvard U.)

# MicroFAC

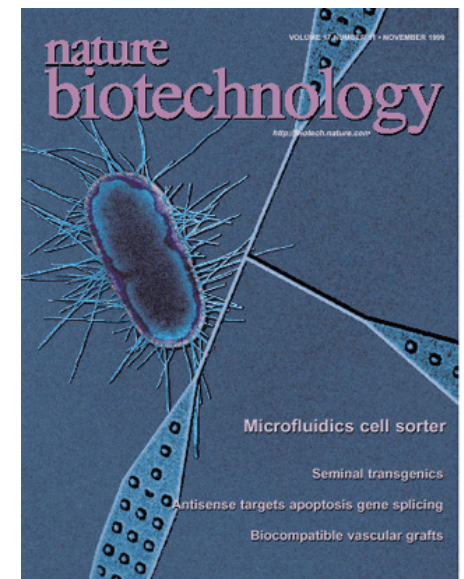
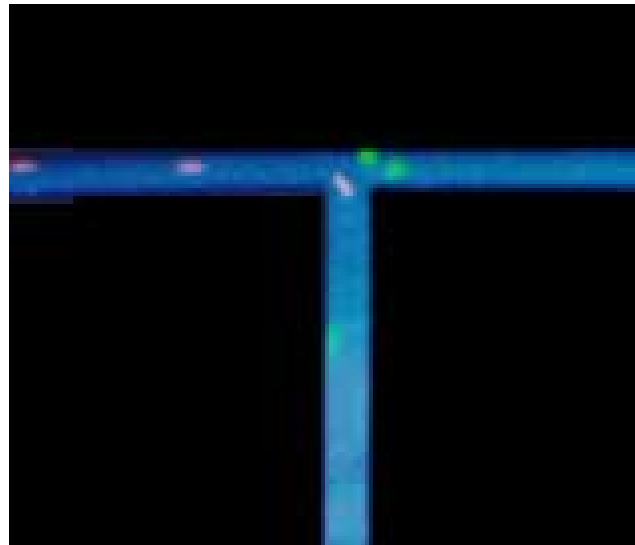
---



- Fluorescence based sorting
- PDMS molded from silicon master
- Feedback controlling fluid flow (electroOsmotic flow)

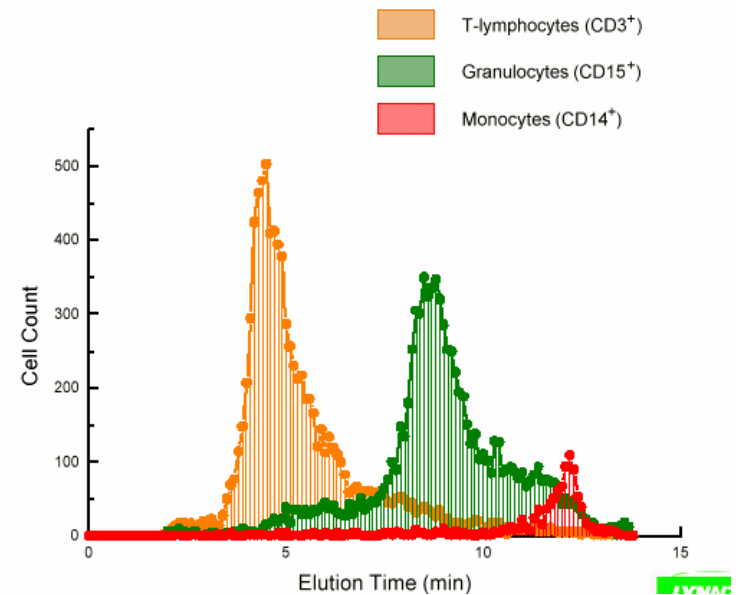
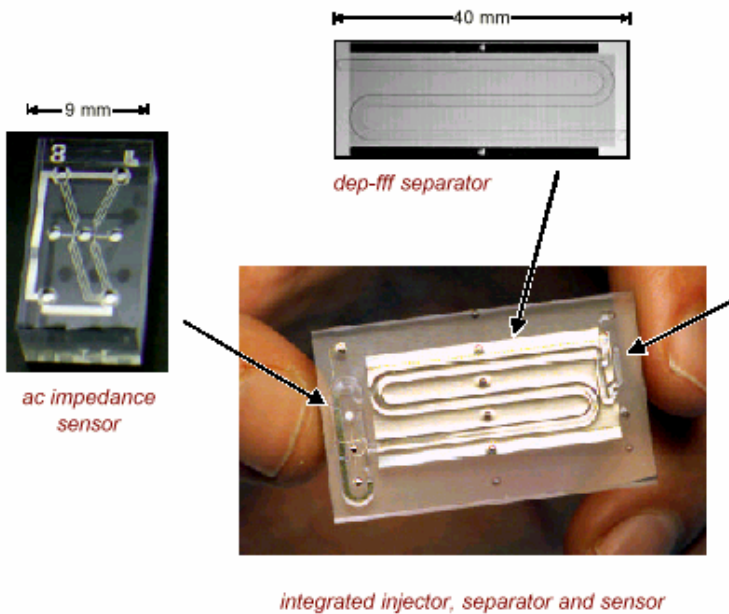
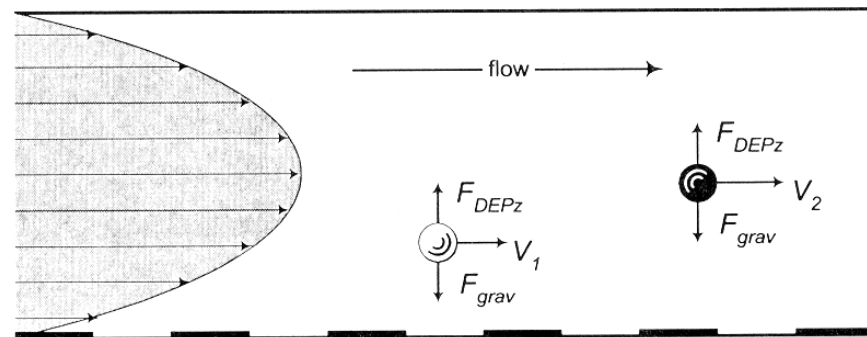


Quake (CalTech)



# DEP Cell Sorter

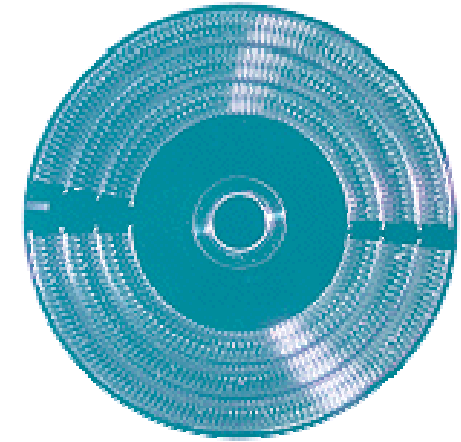
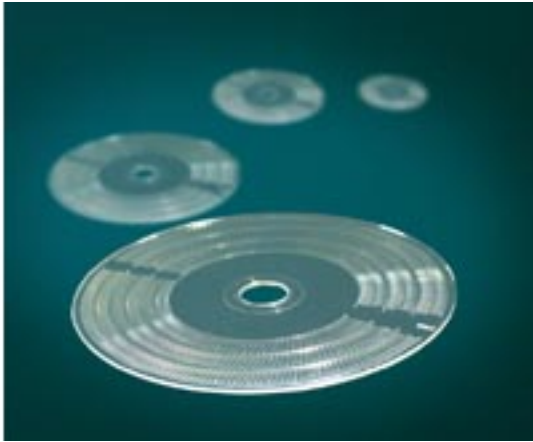
- U. Texas – Houston
- Rare cell detection
- Field flow fractionation using dielectrophoretic force



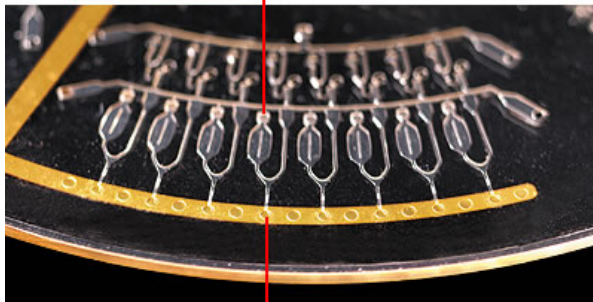


# Microfluidics on a CD

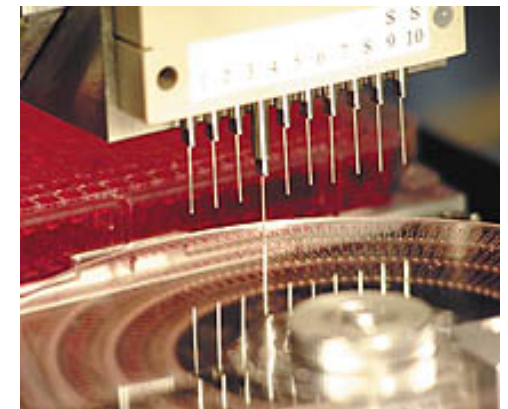
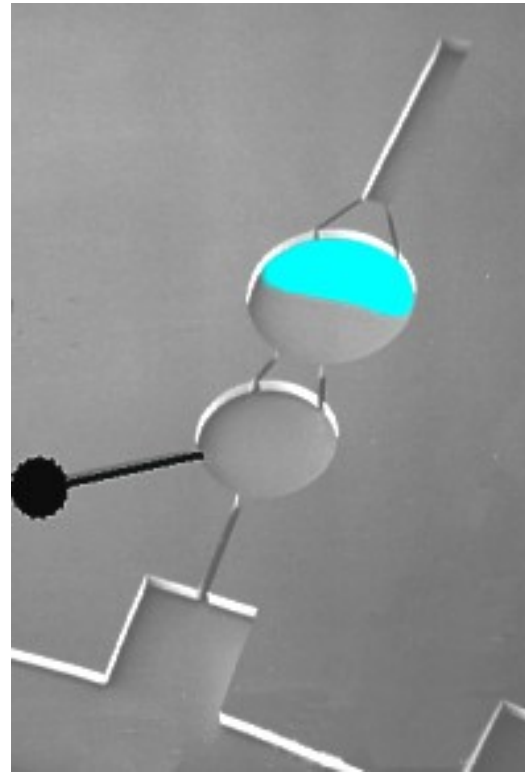
- Gyros Inc.
- Centrifugal forces
- Metering
- Fluid delivery
- Protein analysis
- Hematology



Sample well

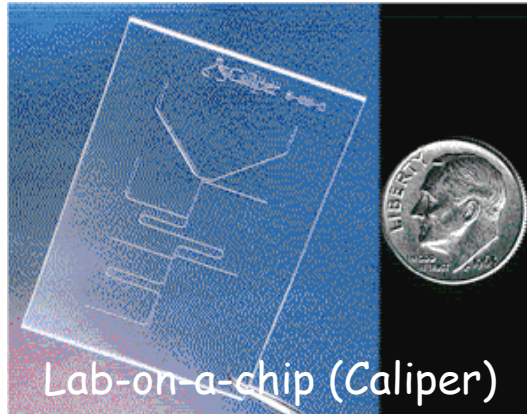


Reaction chamber

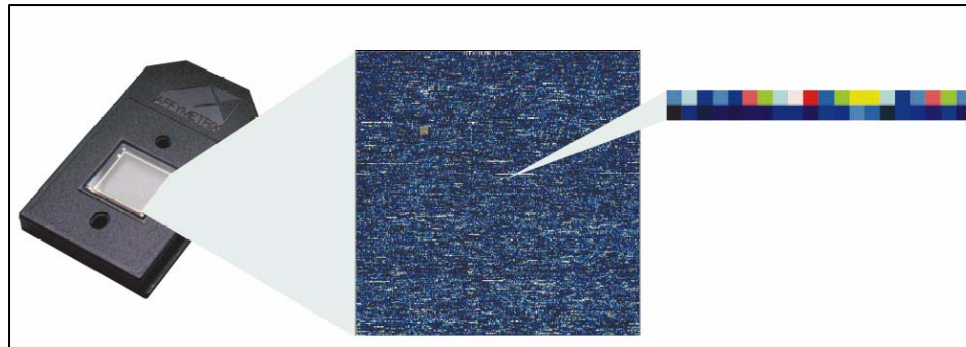


# Examples of bioMEMS Systems

---



- Detection and diagnosis
- **Synthesis and analysis**
- Interaction and interrogation
- Treatment



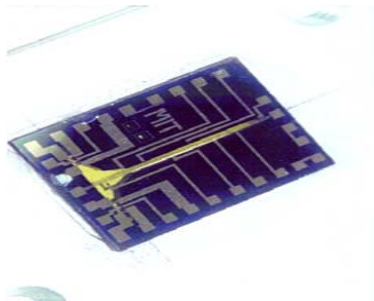
GeneChip (Affymetrix)



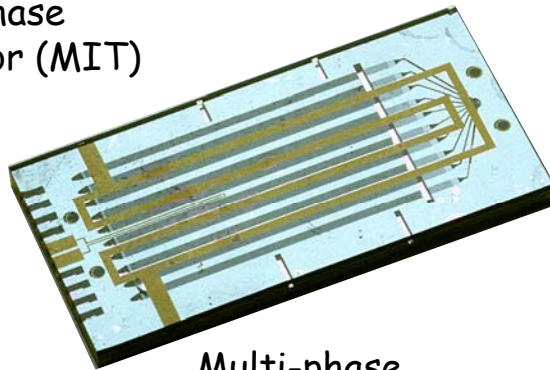
ImmunoChip (Aclara)

# Synthesis with Microreactors

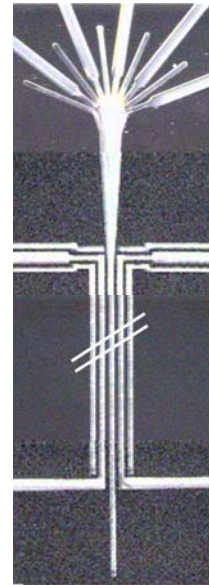
---



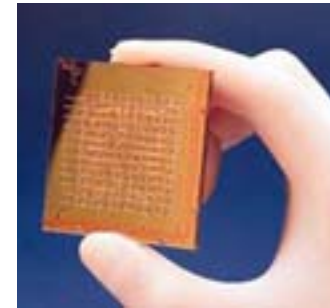
Gas phase reactor (MIT)



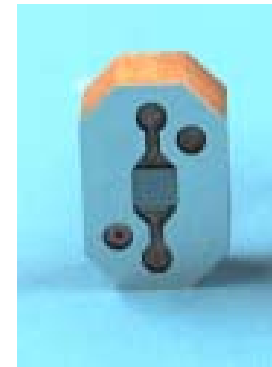
Multi-phase reactor (MIT)



Liquid phase reactor (MIT)



High throughput microreactor (Orchid BioSciences)

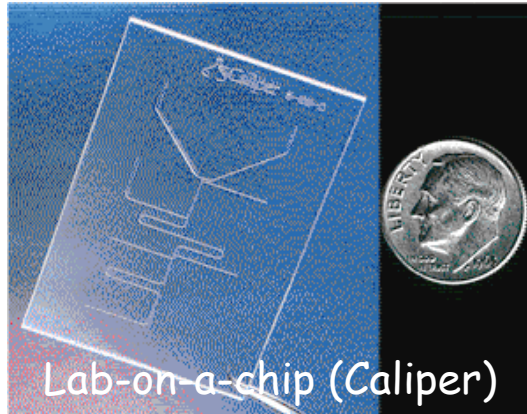


Micromixer (IMM)

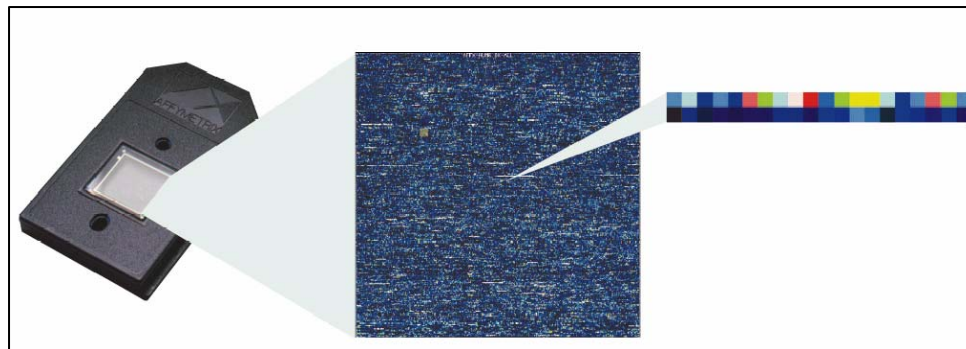
- Microreactors for synthesis and chemical researches
- Temperature and pressure sensors, heaters, heat exchangers, valves, separators...

# Examples of bioMEMS Systems

---



- Detection and diagnosis
- Synthesis and analysis
- **Interaction and interrogation**
- Treatment



GeneChip (Affymetrix)

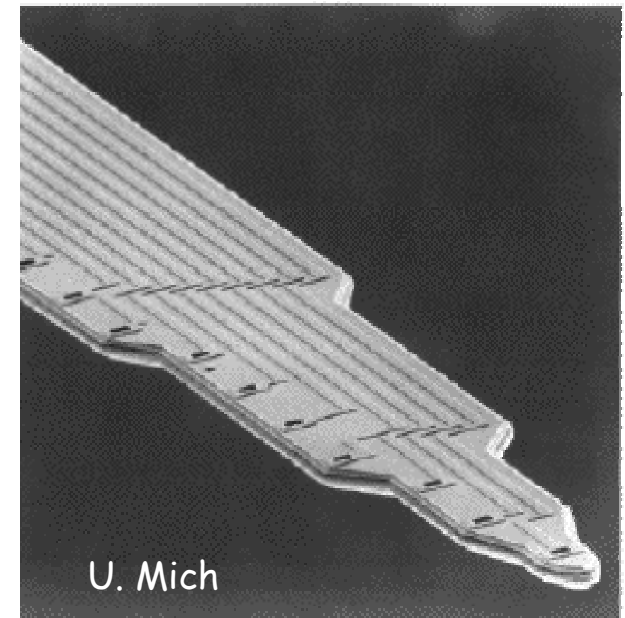
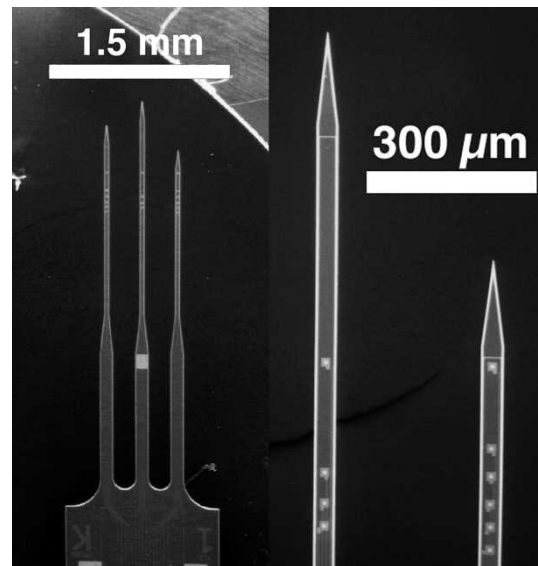
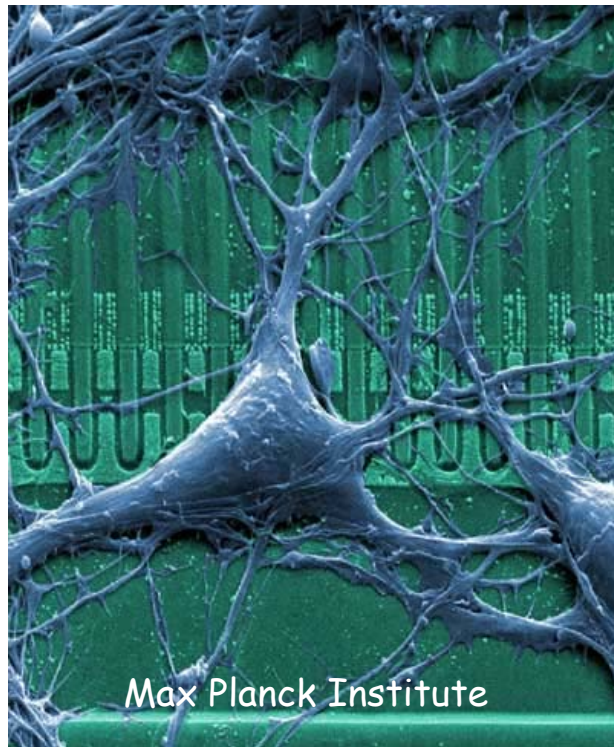


ImmunoChip (Aclara)

# Neuro implant

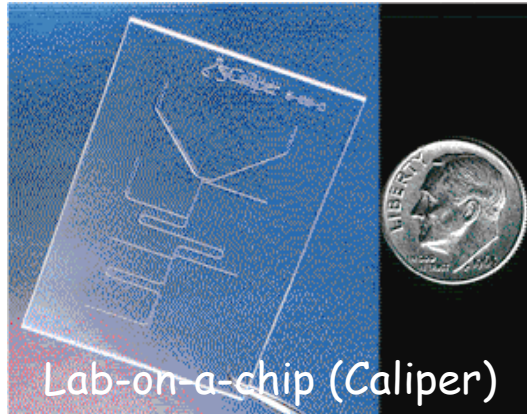
---

- Neuro-circuit interaction - neuro recording
- Prosthesis research
- Chemical delivery - molecular probe
- Issues with long term implant - bio compatibility

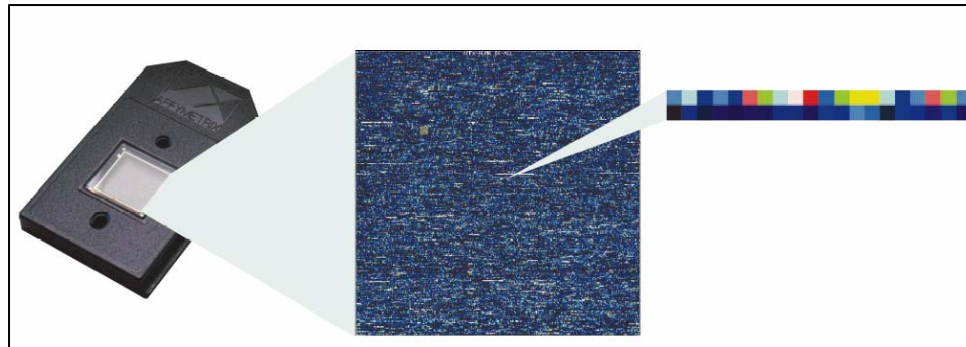


# Examples of bioMEMS Systems

---



- Detection and diagnosis
- Synthesis and analysis
- Interaction and interrogation
- **Treatment**

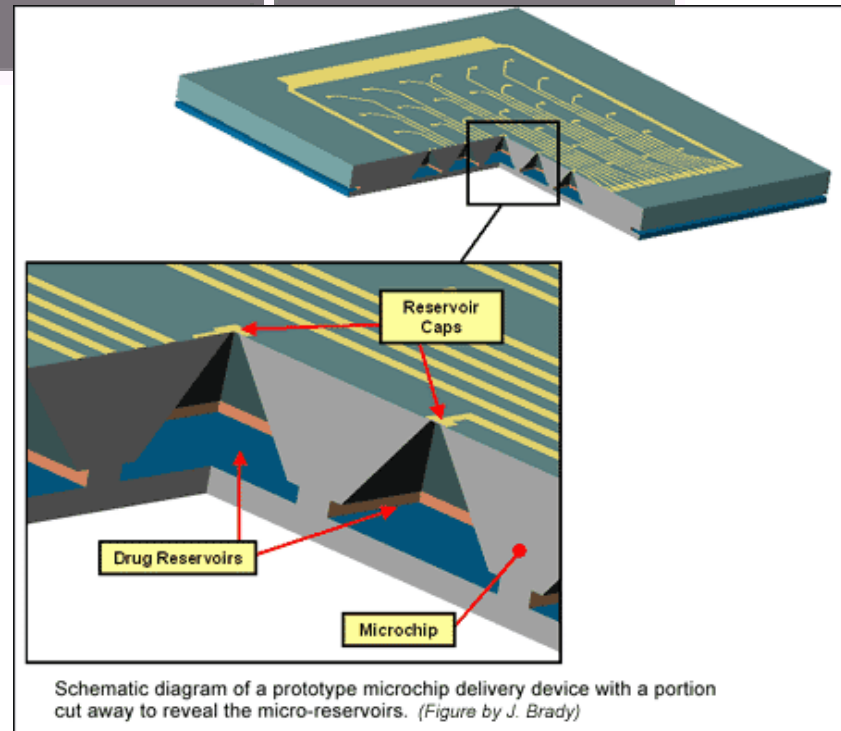
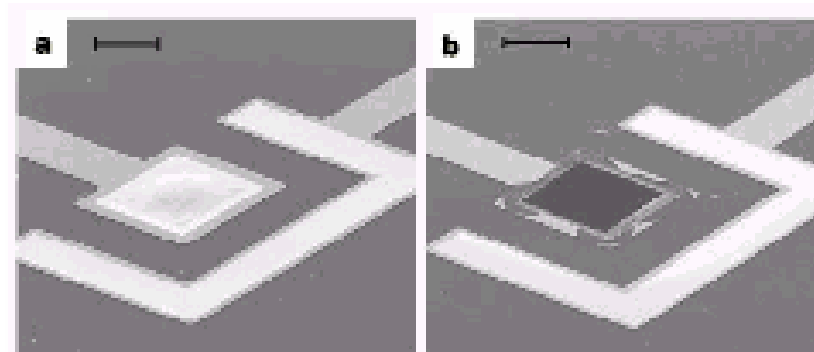
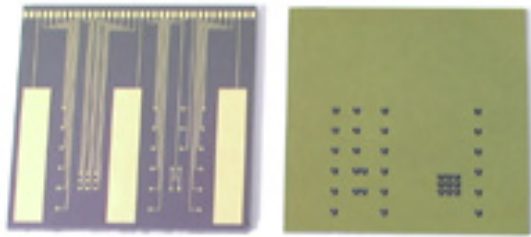


GeneChip (Affymetrix)



ImmunoChip (Aclara)

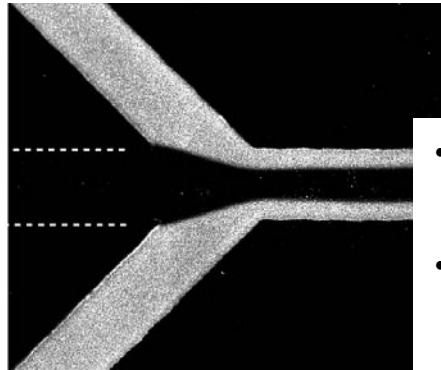
# Drug-delivery



- Santini (Microchips)
- Controlled delivery
- Dry chemicals packed in wells
- Electrochemistry of gold film with body fluid (erosion)
- Quick response time

# Tissue Engineering

neoglyco-protein

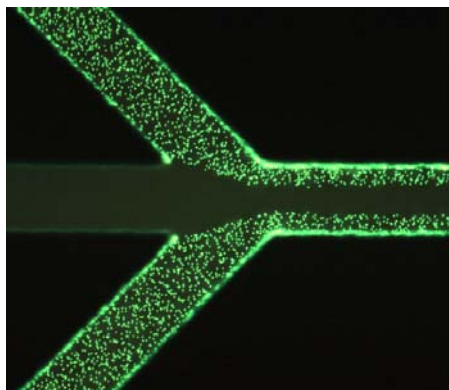


BSA

neoglyco-protein

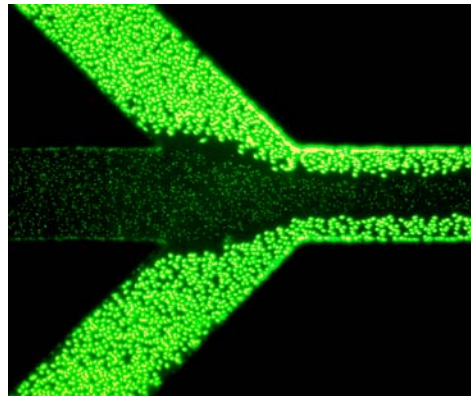
- Patterning cells using microfluidics
- Patterning cells using micro contact printing
- Patterning protein
- Co-culture of cells (hepatocytes and fibroblasts)

E coli

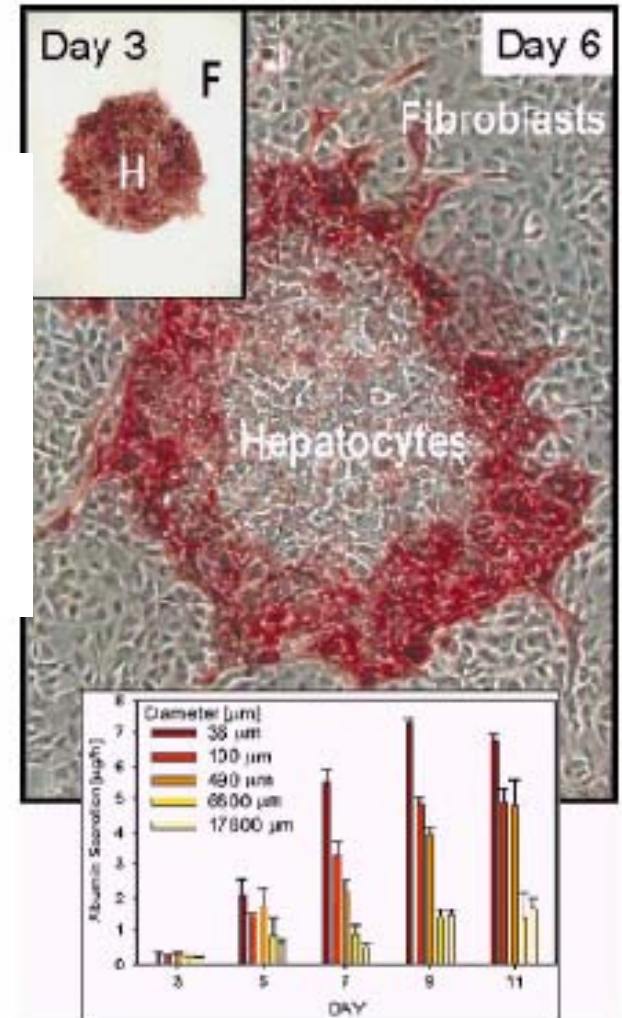


E. coli

erythrocytes

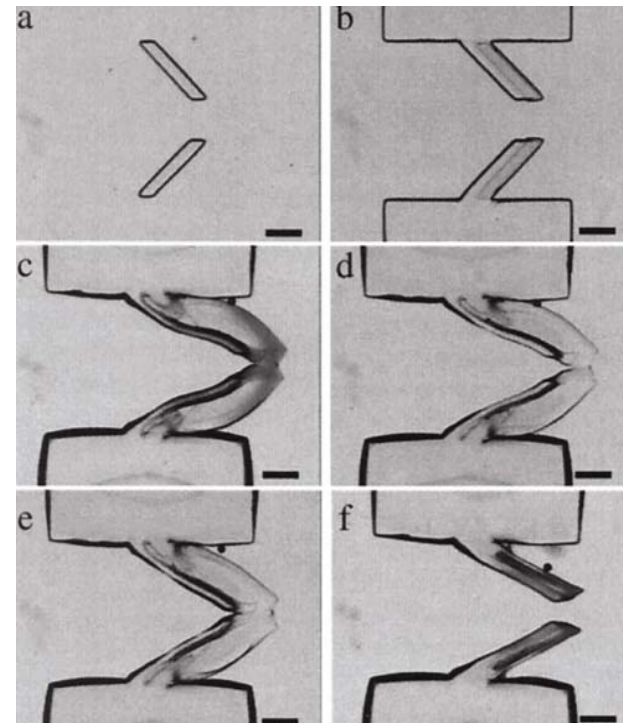
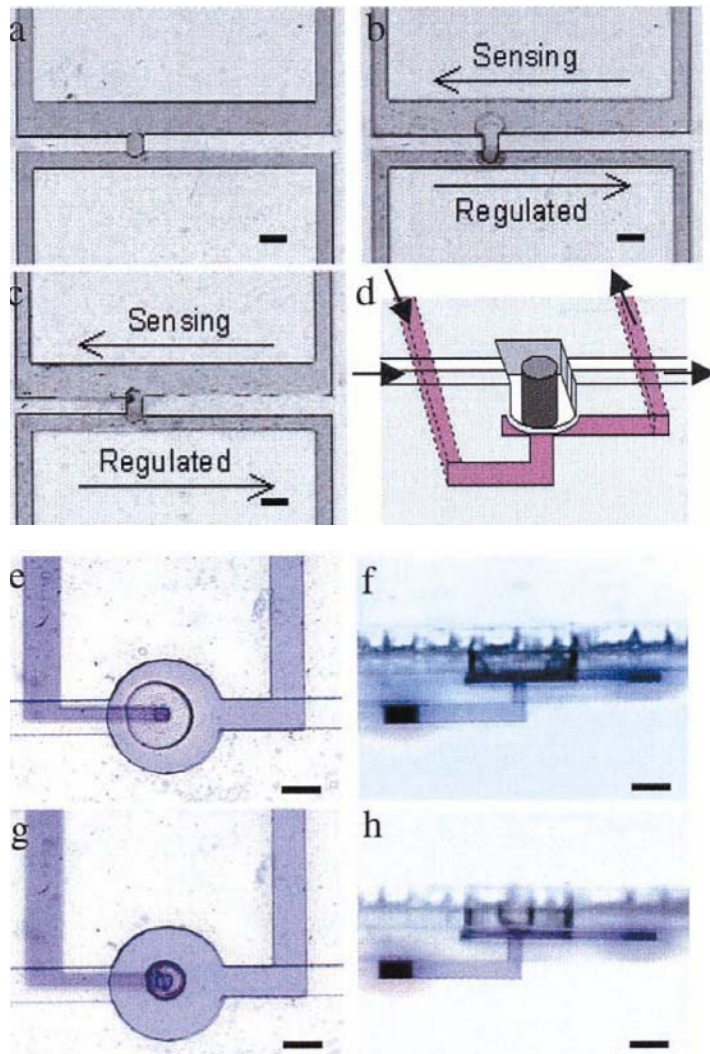


erythrocytes



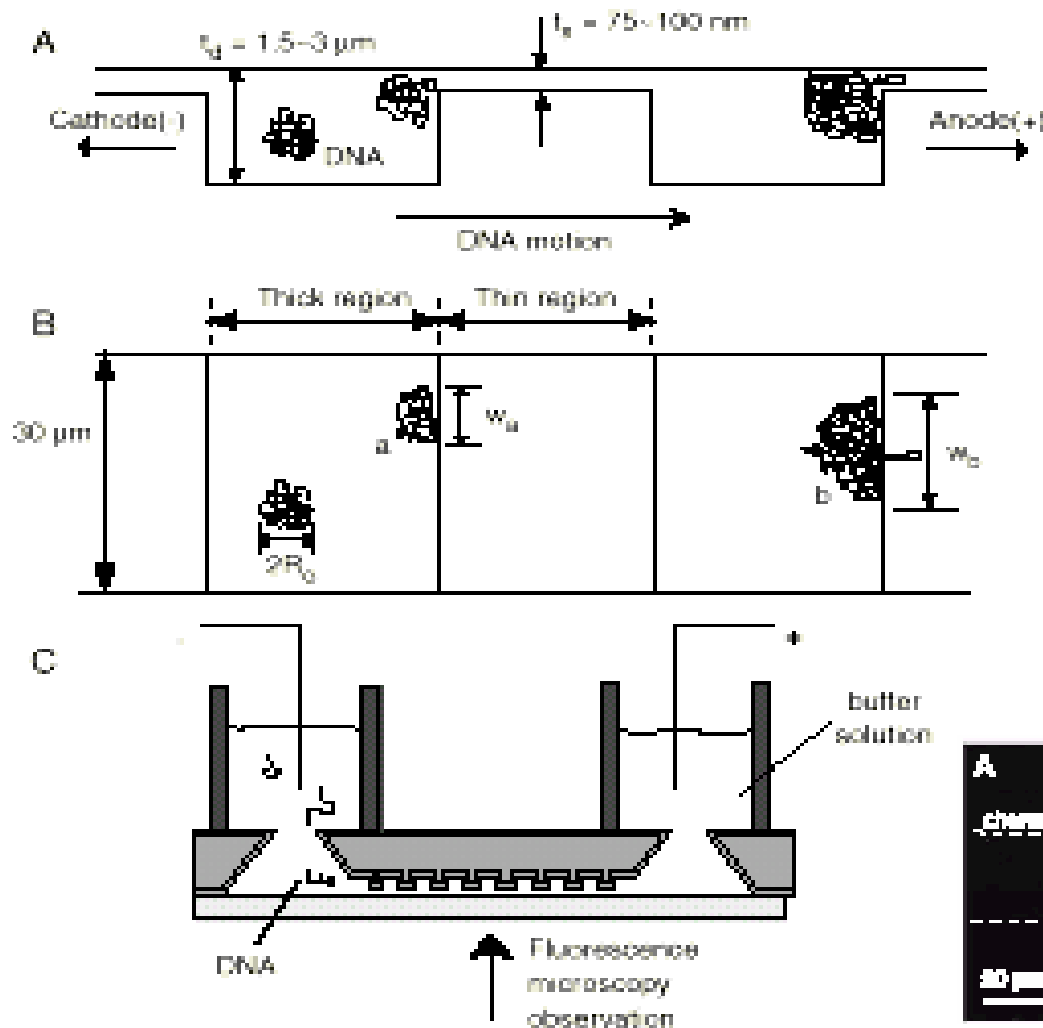


# Small Materials – e.g. Hydrogel

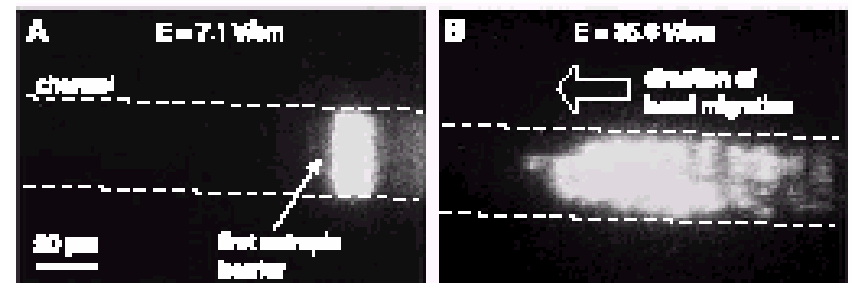


- Beebe (U Wisconsin)
- Hydrogel
- pH responsive
- Sensing and regulating
- In situ fabricated

# NEMS/nanofluidics



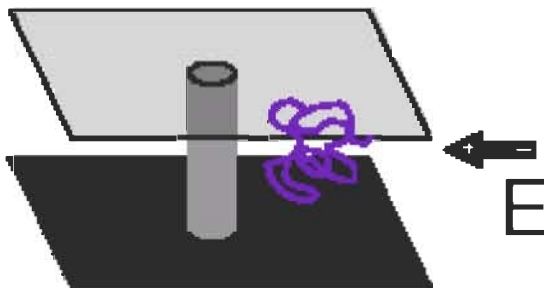
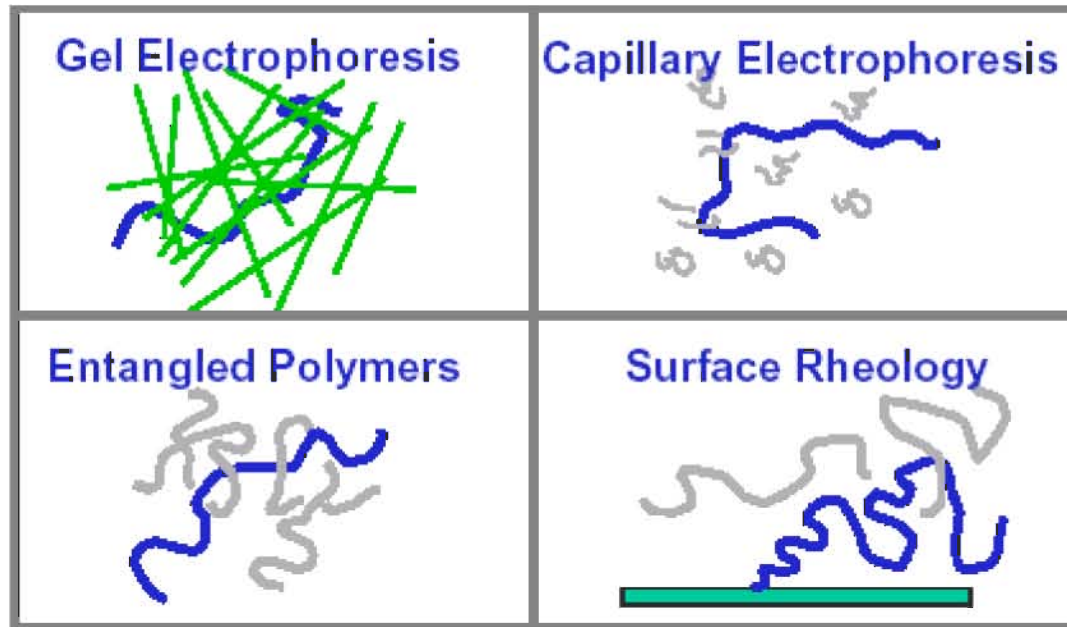
- Craighhead (Cornell U.)
- Using entropic effect of large DNA molecules
- Near field fluorescence detection



# Dynamics of DNA-Obstacle Collisions

---

Polymer collisions are important in complex fluids...



Greg Randall and Prof. Patrick Doyle

---

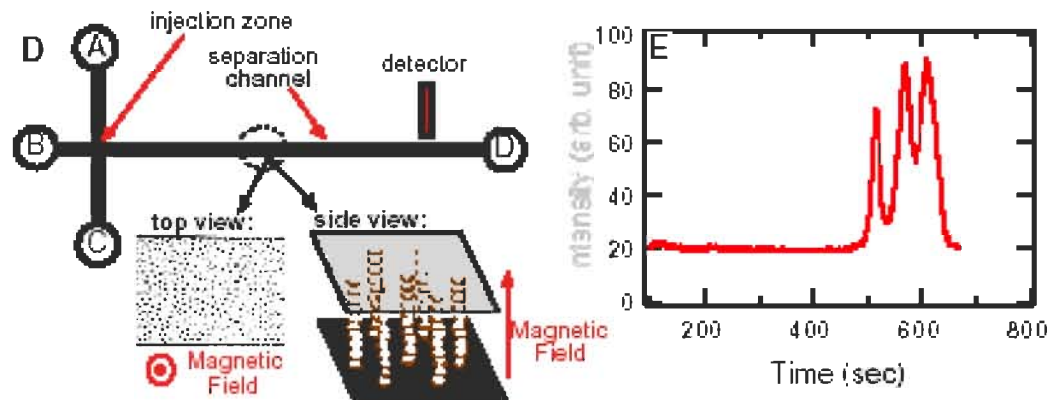
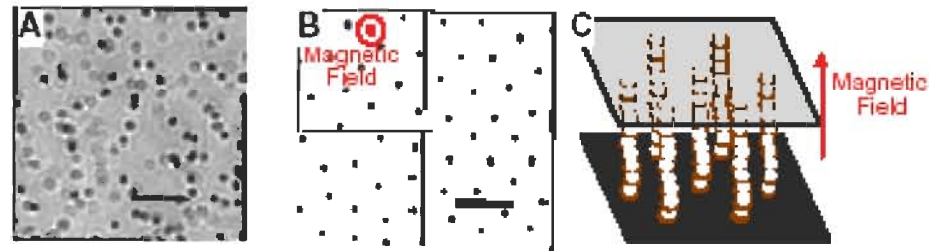
MIT BioMEMS, 6.152J 2005

# Motivation

## DNA Electrophoresis in Magnetic Arrays

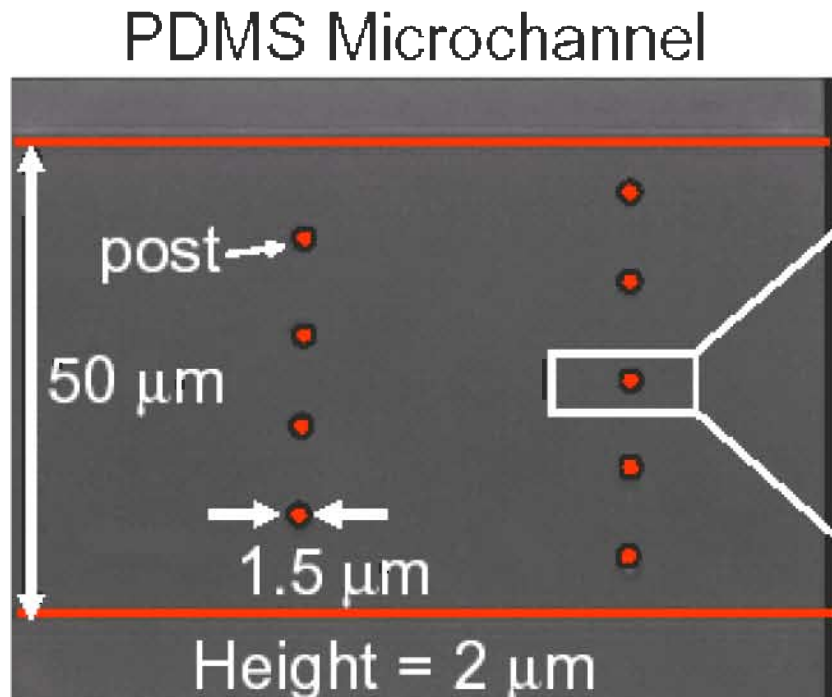
*Doyle, Bibette, Bancaud and Viovy, Science 295, 2237 2002*

*Separation occurs due to collisions with the posts*

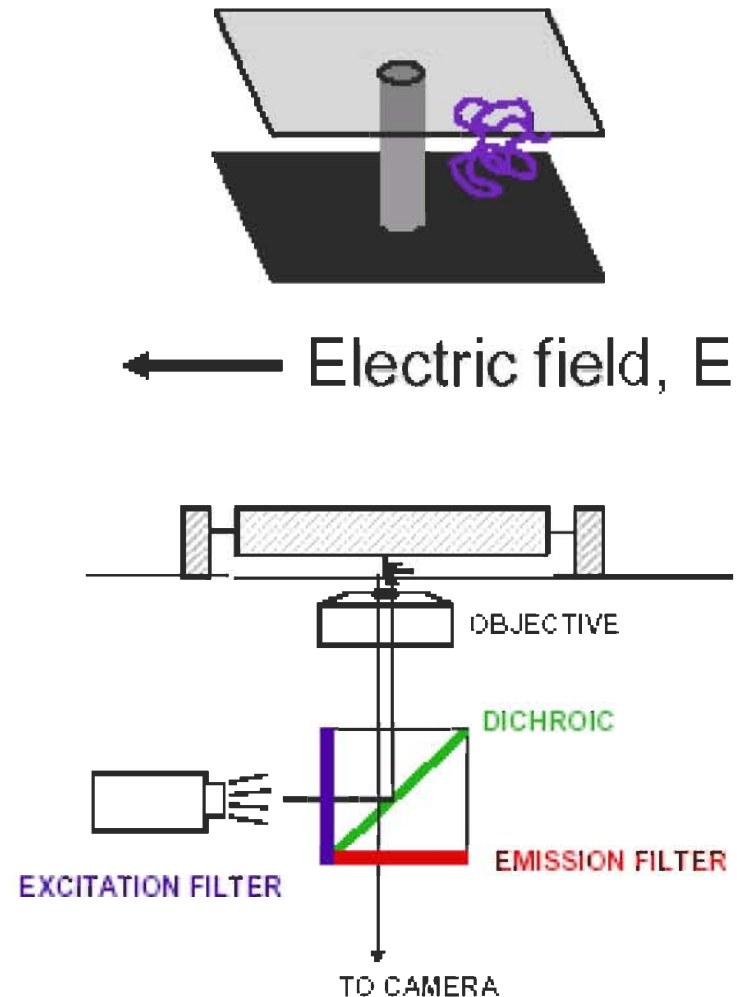


# A Model System

Microfabricated posts: well defined, sparse



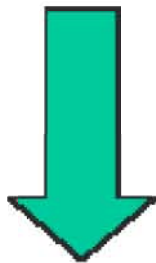
Molecule:  $\lambda$ -phage DNA  
Fluorescent Dye: TOTO  
Stain at 1 dye:5 bp



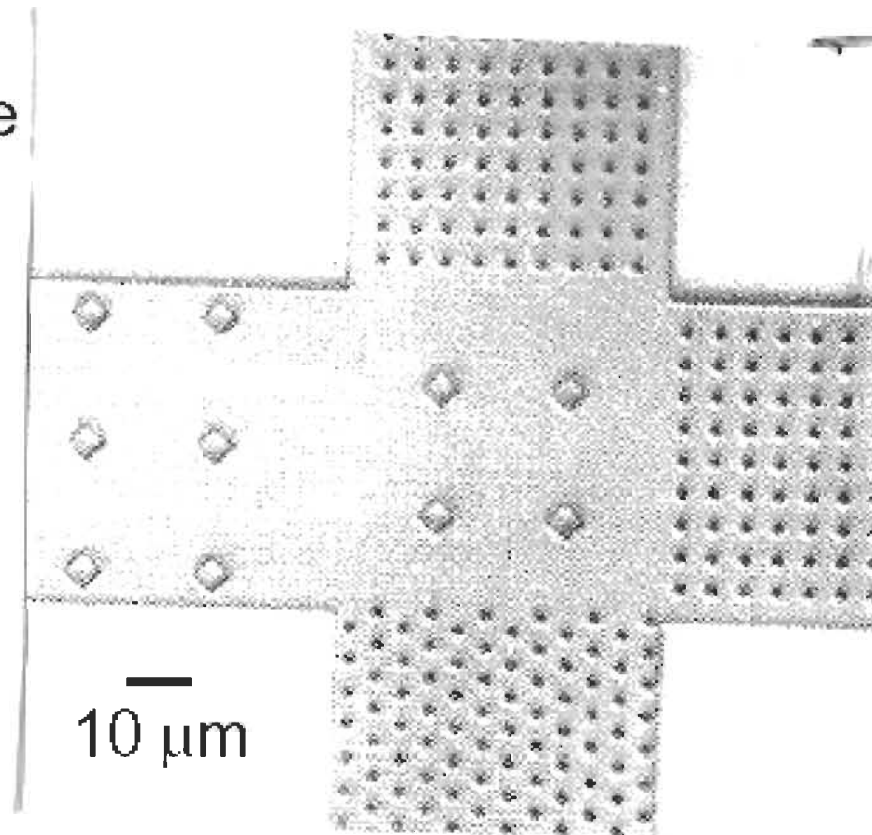
# Image reversal resist

---

Used standard MTL Image Reversal procedure



Great feature definition

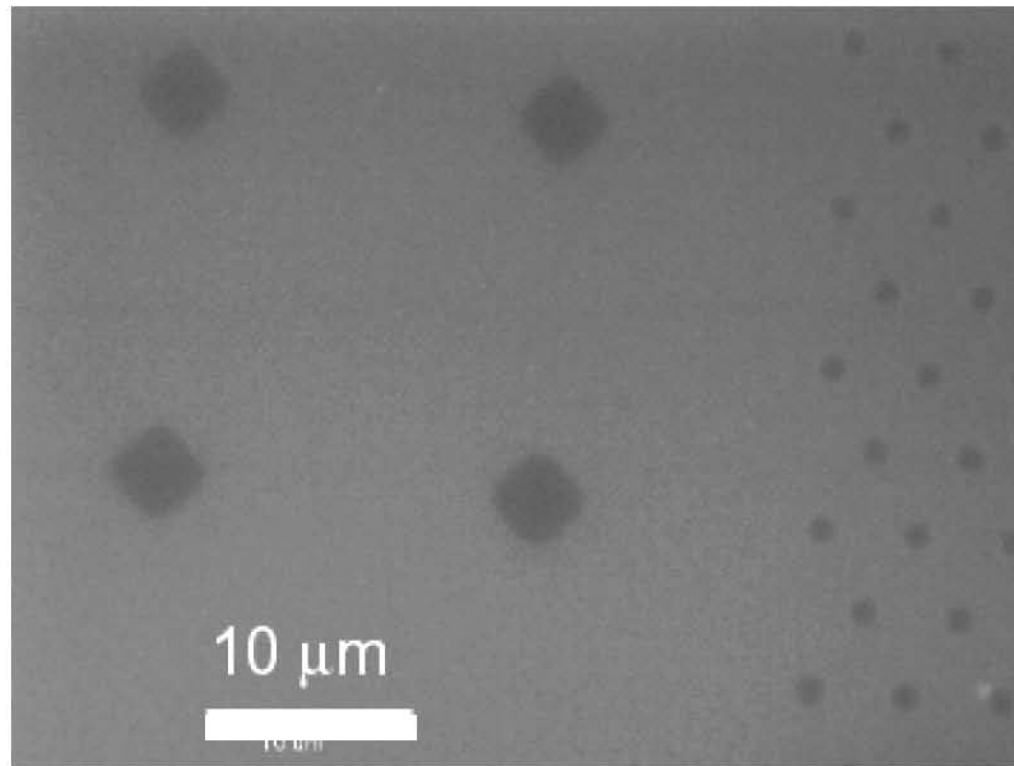


2-μm thick AZ 5214

# Image reversal resist

---

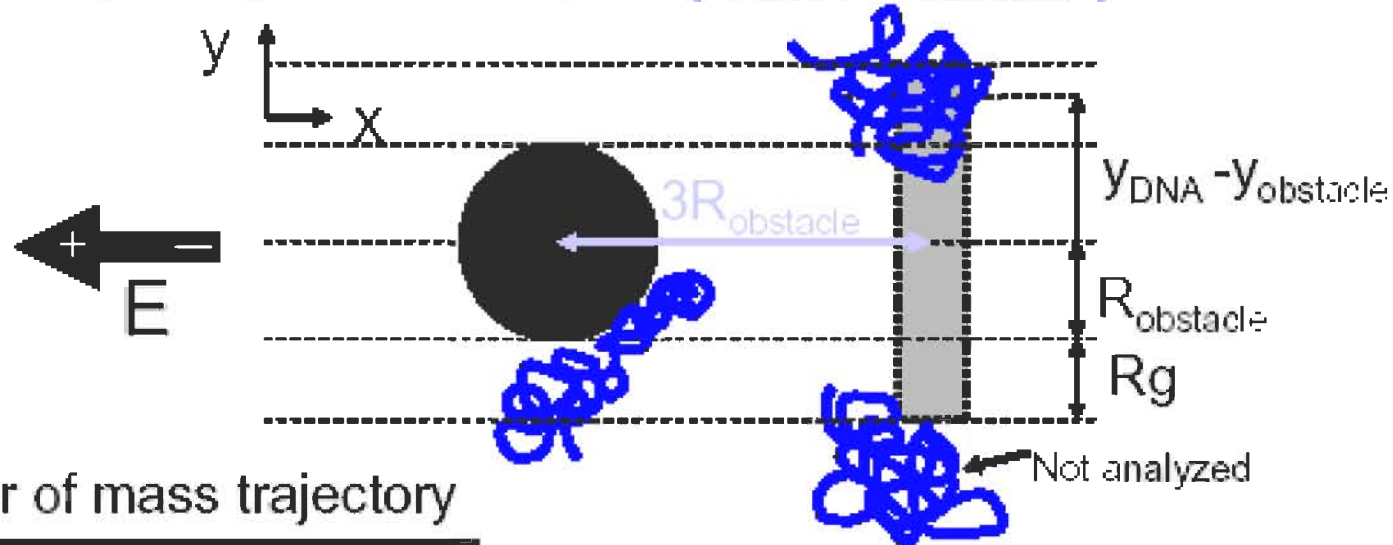
After molding PDMS



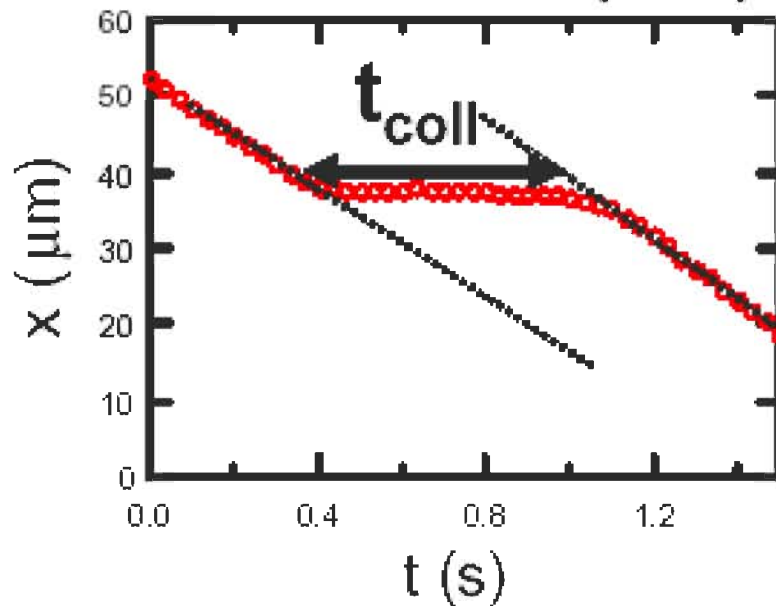
2- $\mu\text{m}$  thick PDMS microchannel filled with fluoroscene

# Collision analysis

Impact parameter,  $b = |y_{\text{DNA}} - y_{\text{obstacle}}|$



Center of mass trajectory



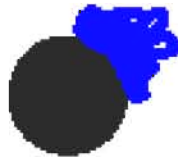
- Track DNA with  $b < R_g + R_{\text{obstacle}}$
- Track center of mass position
- Determine collision time  $t_{\text{coll}}$  from linear offset



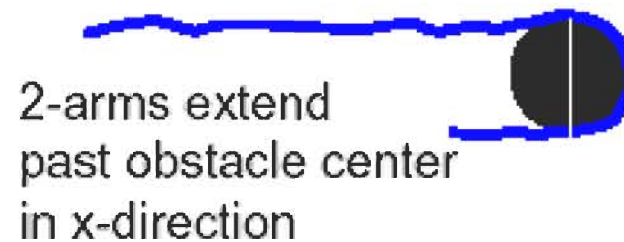
# Types of Collisions: Hook or Roll-off

---

## ROLL-OFF COLLISIONS



## J-SHAPED COLLISIONS



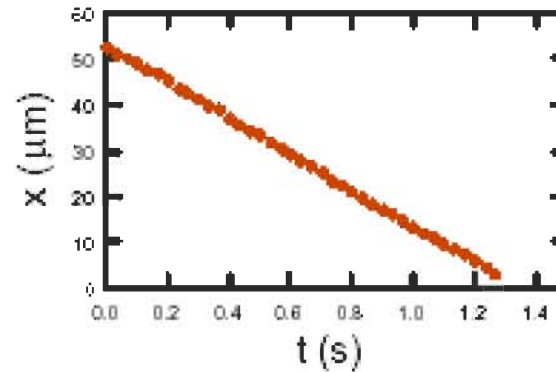
**Movies!!**

## U-SHAPED COLLISIONS

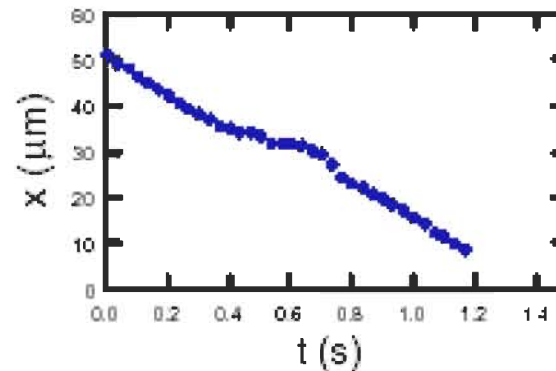
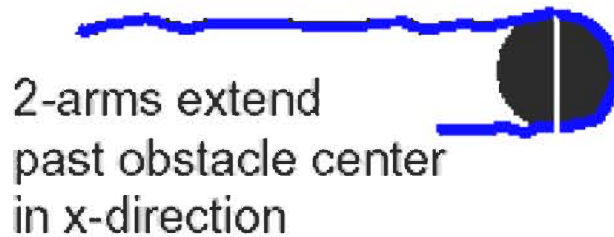


# Analyzing Types of Collisions

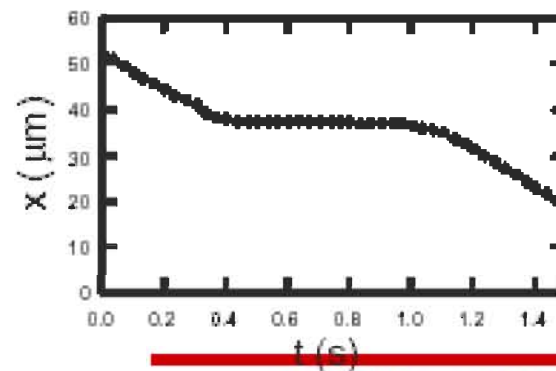
## ROLL-OFF COLLISIONS



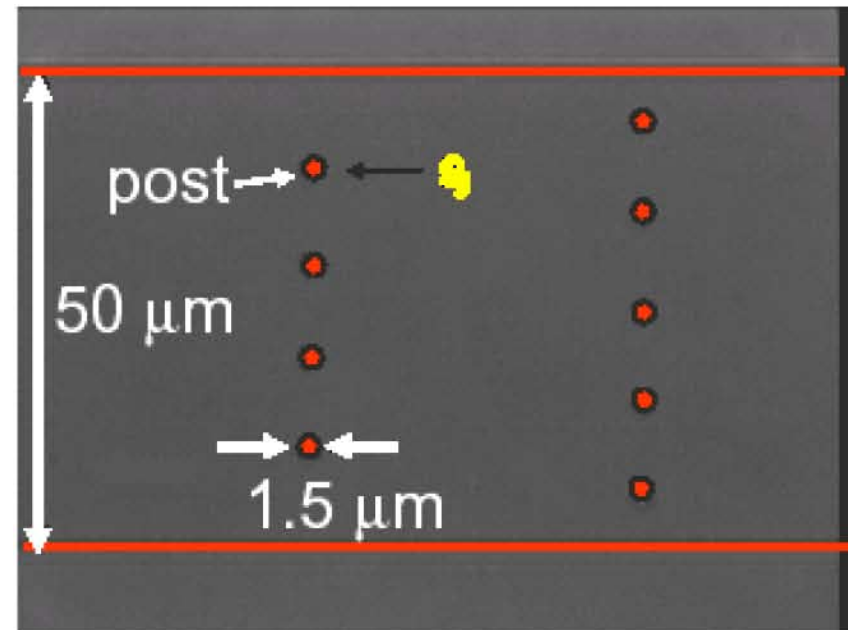
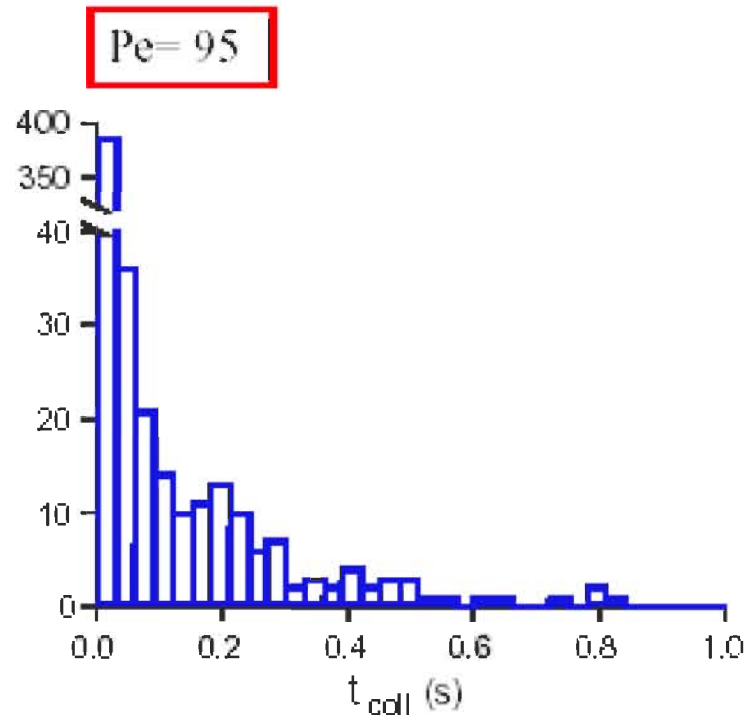
## J-SHAPED COLLISIONS



## U-SHAPED COLLISIONS



# Application to DNA Separations



Collision time histogram can be applied to a “macrotransport” separation scheme

Reference: Brenner & Edwards (1993), Montroll & Weiss

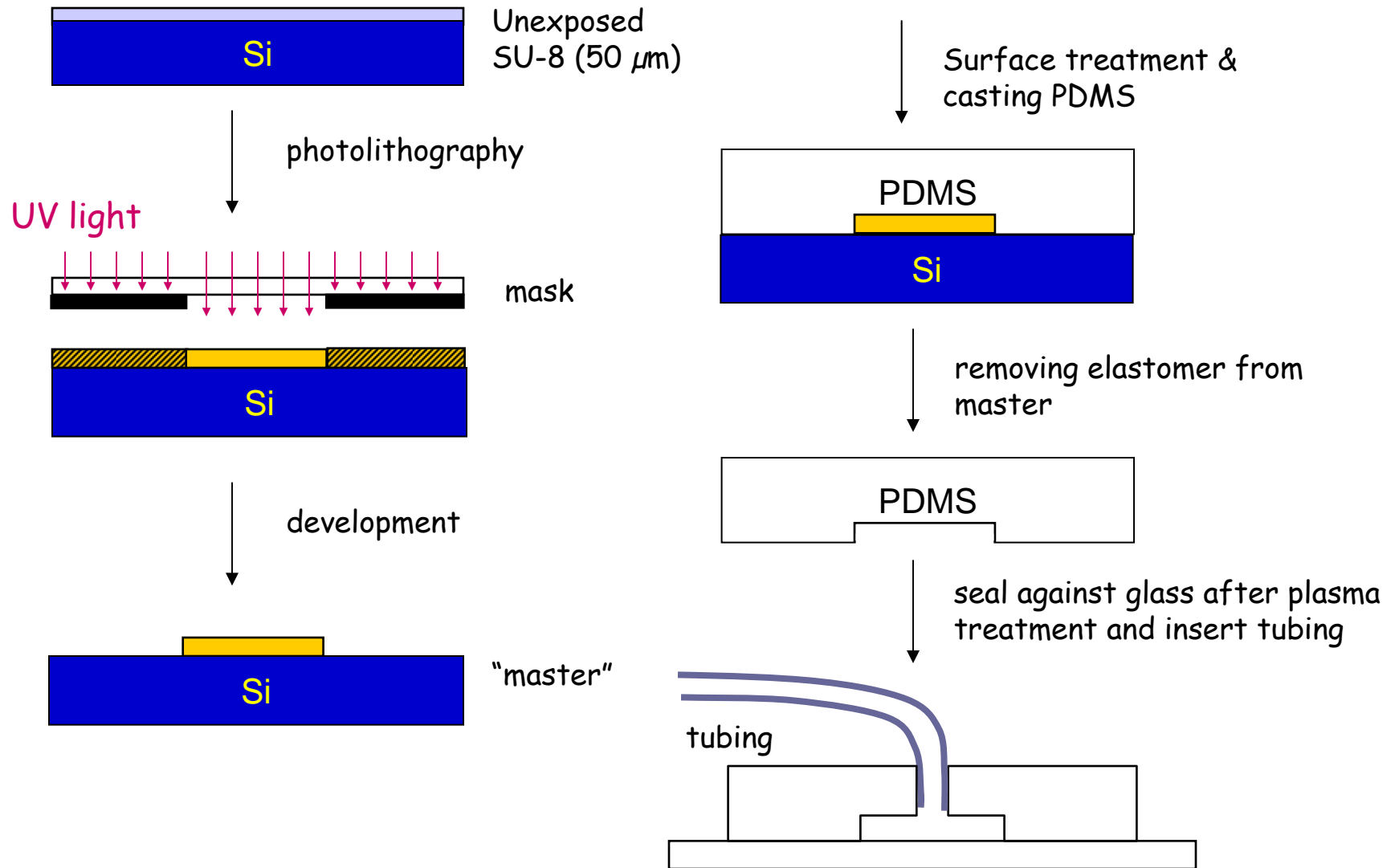
Related References: Dorfman & Brenner (2001)

---

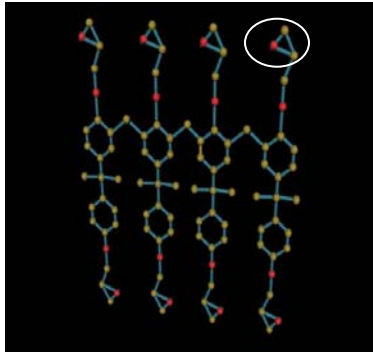
---

# Our Process

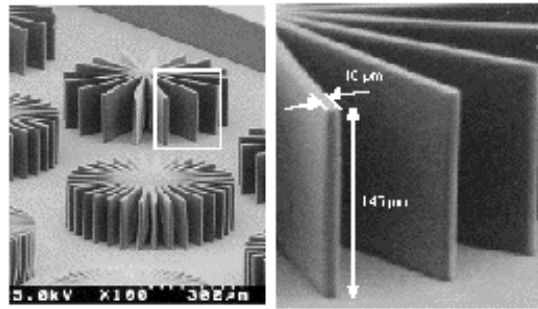
# Process Flow - Overview



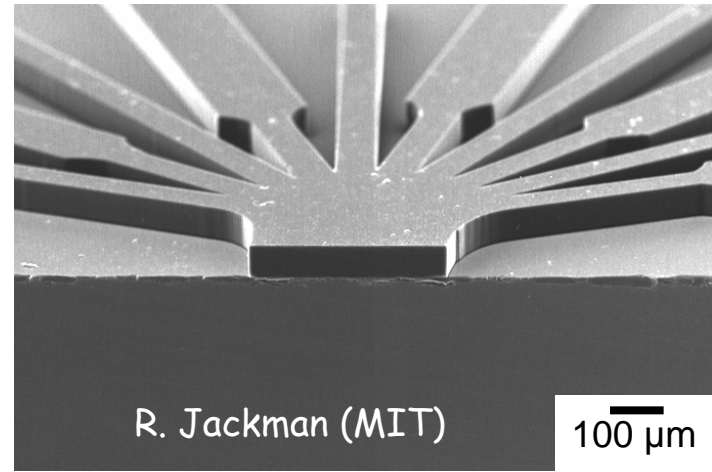
# The Master Material - SU-8



Structure of SU-8 molecule (SOTEC Inc)



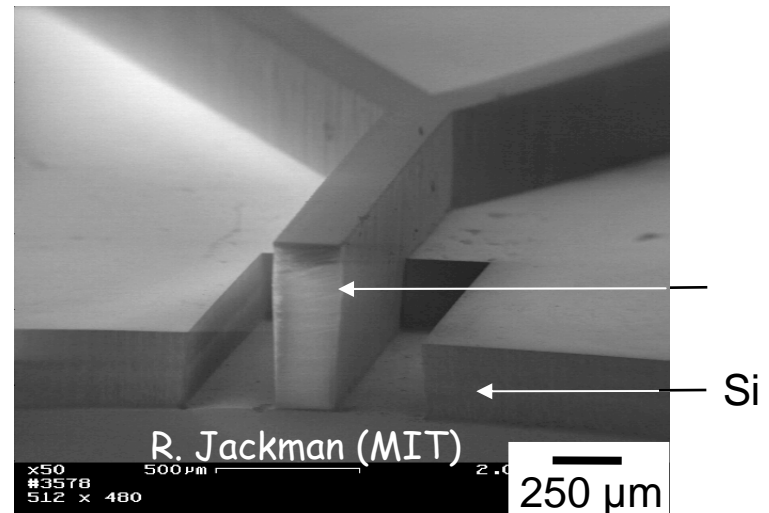
High aspect ratio structure (EPFL)



R. Jackman (MIT)

100 μm

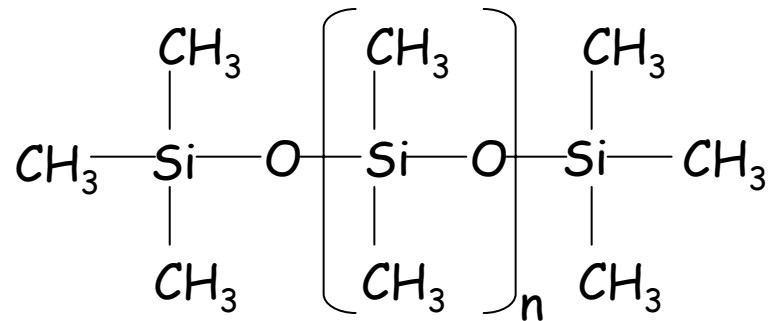
- Negative photodefinable epoxy
- Capable of forming high-aspect ratio (25:1) and thick (2mm) structures
- Used as electroplating template, in microfluidic applications, and as structure material for other microfabrication techniques



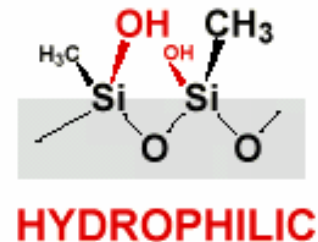
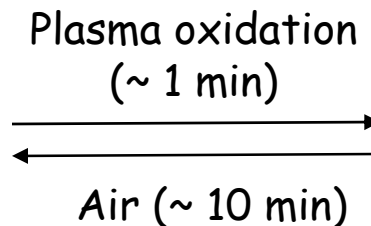
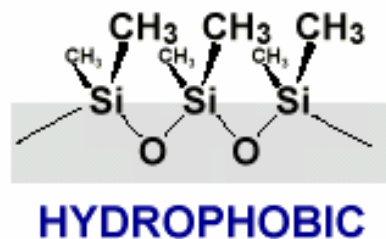
R. Jackman (MIT)

250 μm

# Replica Material - PDMS

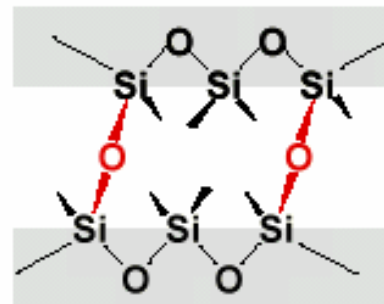


- Upon treatment in oxygen plasma, PDMS seals to itself, glass, silicon, silicon nitride, and some plastic materials.



contact PDMS  
surfaces

→



irreversible seal:  
formation of  
covalent bonds

# Photolithography Steps

---

- 1. Define patterns on first layer
  - 1.1 EML hotplate dehydrate wafer at 200C for 1 hr
  - 1.2 EML hood spin coat SU-8
  - 1.3 EML hotplate prebake 15 min at 105C (ramp up from room temp slowly and cool to < 60C)
  - 1.4 EML photo expose through the mask
  - 1.5 EML hotplate postbake 15-20 min at 105C
  - 1.6 EML hood develop SU-8 in developer (PGMEA)
  - 1.7 EML hood dry wafers with nitrogen
  - 1.8 EML hood silanize wafers (1 hr)



# Micromolding Steps

---

---

- 2. Molding SU-8 structures with PDMS
  - 2.1 Mix prepolymer and initiator (10:1)
  - 2.2 Degas the mixture
  - 2.3 Cure PDMS at 65C for 2 hr

# Packaging

---

---

- 3. Making PDMS-based devices
  - 3.1 Carefully remove PDMS from wafer
  - 3.2 Cut devices out using a razor blade
  - 3.3 Punch holes in PDMS
  - 3.4 Clean PDMS and glass substrates
  - 3.5 Plasma ash PDMS and glass substrates
  - 3.6 Bond
  - 3.7 Insert tubing
  - 3.8 Test

# Our Mask

