

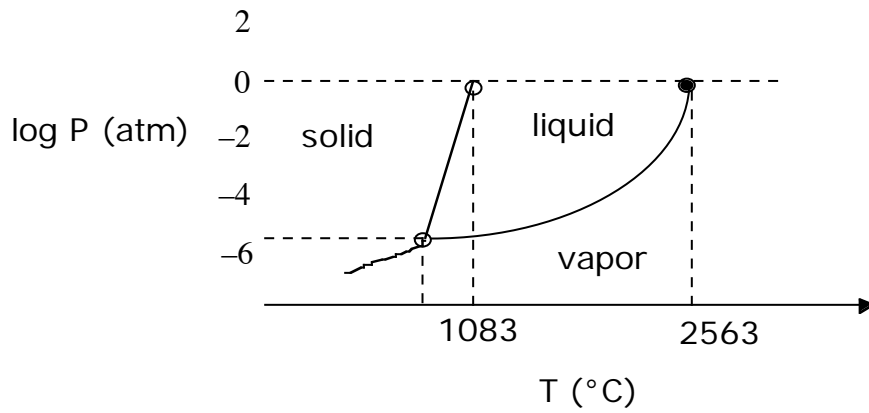
Session #33: Homework Solution

Problem #1

Given the triple point of copper (Cu) and data provided in the Periodic Table, sketch a reasonable P/T equilibrium phase diagram for copper.

Triple point: $T_T = 1080^\circ\text{C}$
 $P_T = 6.1 \times 10^{-6} \text{ atm}$

Solution



MIT OpenCourseWare
<http://ocw.mit.edu>

3.091SC Introduction to Solid State Chemistry
Fall 2009

For information about citing these materials or our Terms of Use, visit: <http://ocw.mit.edu/terms>.